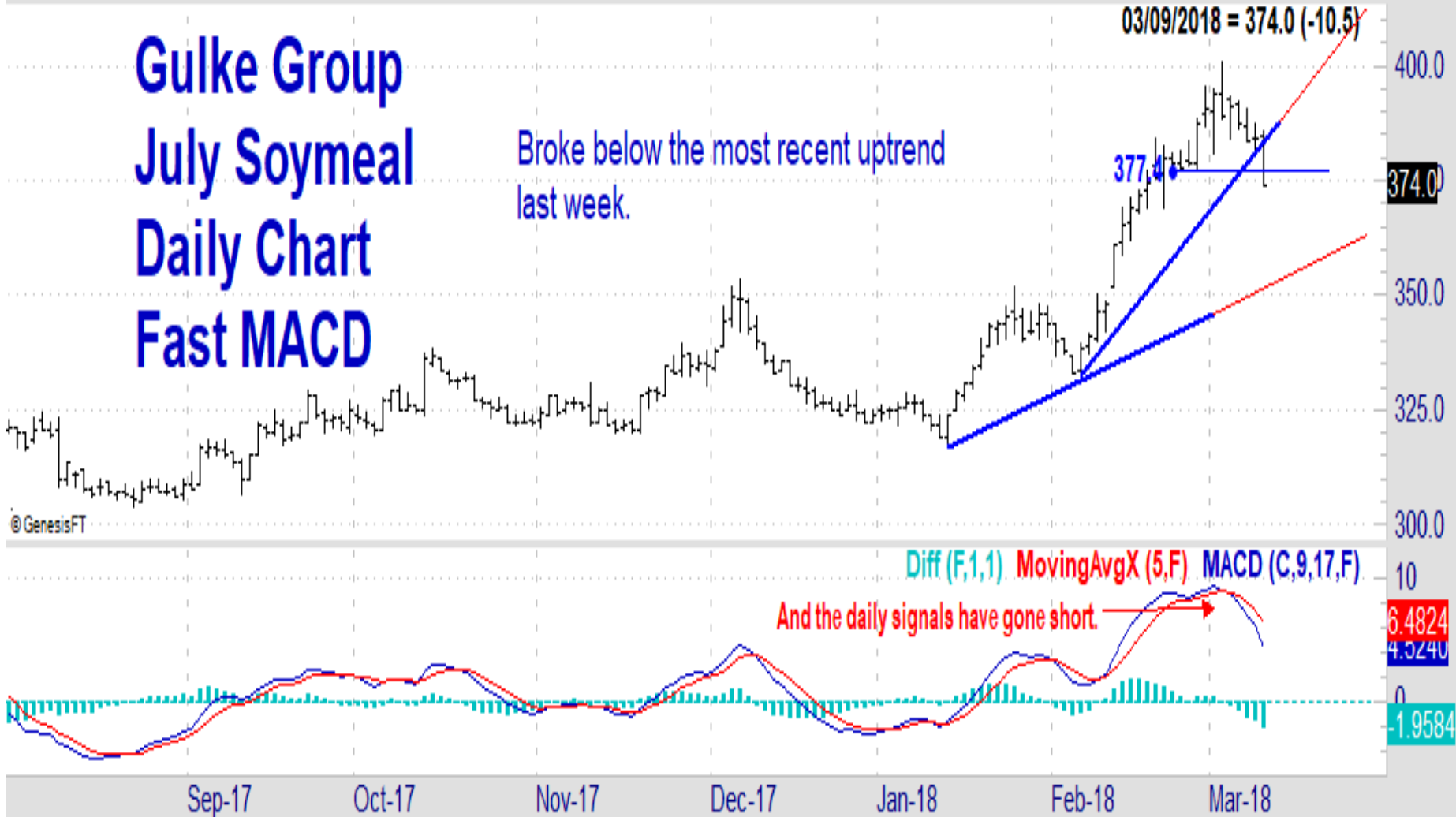


Fri 03/09/2018: O=384.5 H=385.8 L=374.0 C=374.0 TDofM=7 TDofY=47

Gulke Group July Soymeal Daily Chart Fast MACD

Broke below the most recent uptrend last week.

03/09/2018 = 374.0 (-10.5)



Disclaimer: Commodity trading and other speculative/ hedging investment practices involve substantial risk of loss. PAST RESULTS ARE NOT NECESSARILY INDICATIVE OF FUTURE RESULTS when utilizing the commodities markets. Gulke Group and its officers, directors, employees and affiliates may take positions for their own accounts that are the same or that are different to the positions and to the contracts referred to herein. This message contains information which may be confidential or privileged and is intended only for the individual or entity named above or the entity entitled to use a login/ password to www.GulkeGroup.com. It is prohibited for anyone else to disclose, copy, distribute or use the contents of this message. This material and any views expressed herein are provided for informational purposes only and should not be construed in any way as an endorsement or inducement to invest. Prices used in trade recommendations are already reflective of known information.

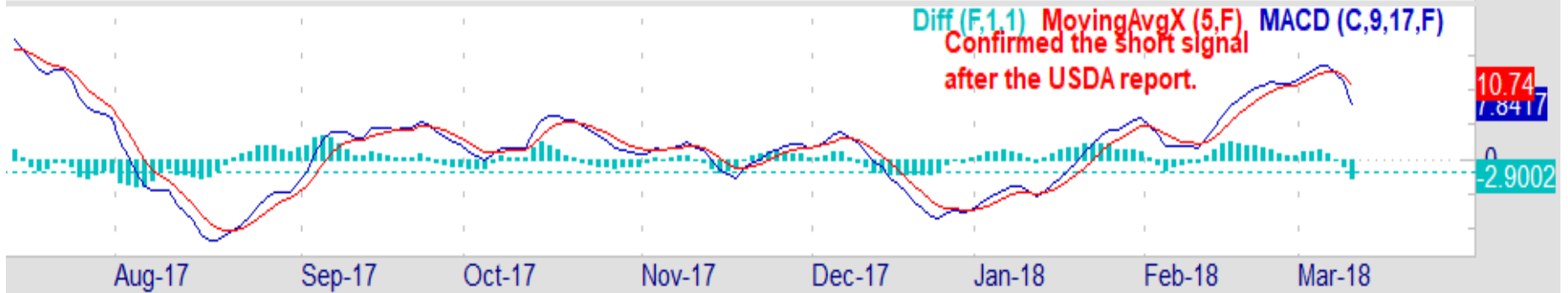
Fri 03/09/2018: O=1072^2 H=1074^0 L=1045^6 C=1046^0 TDofM=7 TDofY=47

Gulke Group July Beans Daily Chart Fast MACD

The bearish USDA report and the potential for rains in Arg drove a -27 sell off in the bean market heading into the weekend.



© GenesisFT

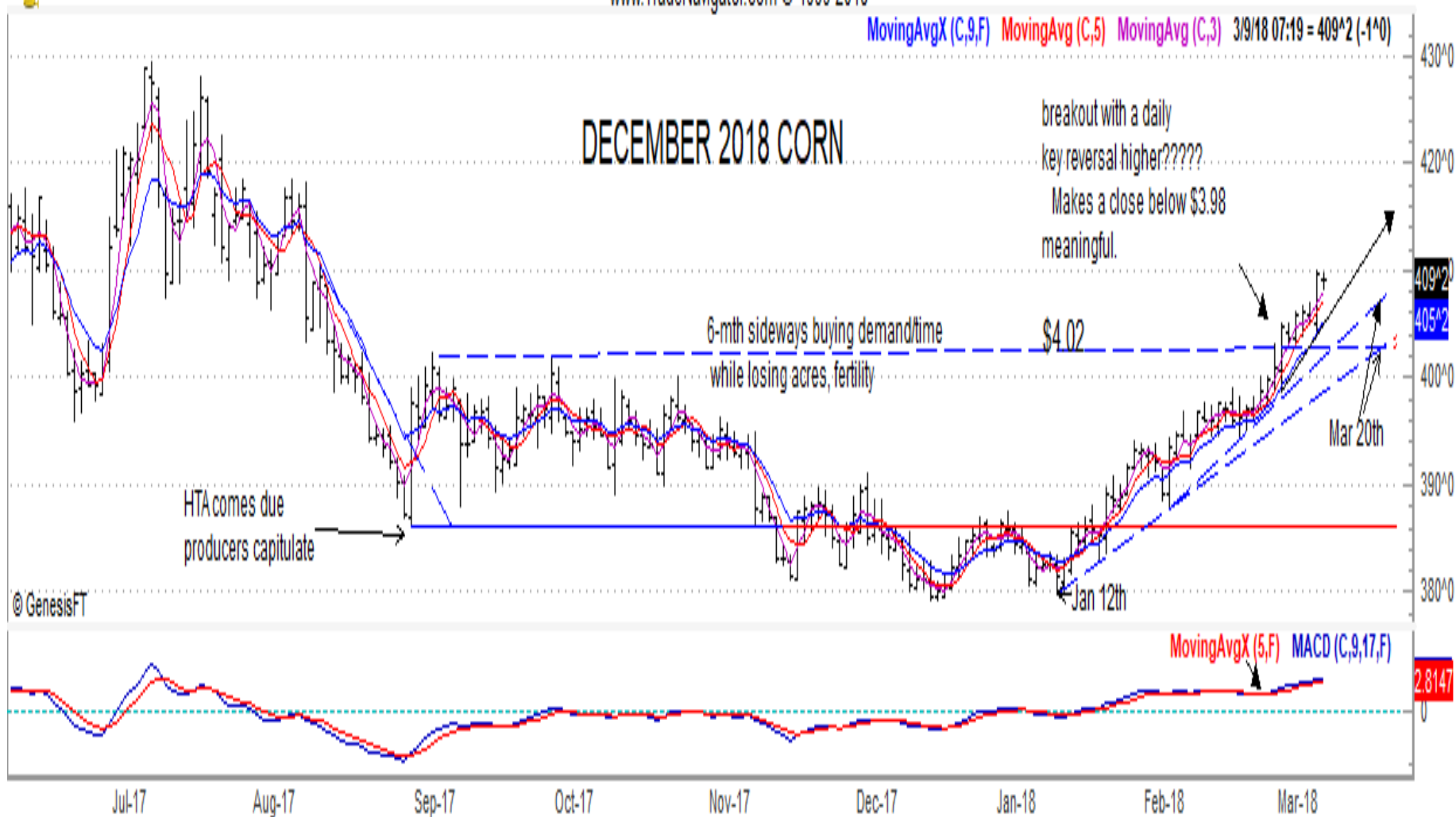


Disclaimer: Commodity trading and other speculative/ hedging investment practices involve substantial risk of loss. PAST RESULTS ARE NOT NECESSARILY INDICATIVE OF FUTURE RESULTS when utilizing the commodities markets. Gulke Group and its officers, directors, employees and affiliates may take positions for their own accounts that are the same or that are different to the positions and to the contracts referred to herein. This message contains information which may be confidential or privileged and is intended only for the individual or entity named above or the entity entitled to use a login/ password to www.GulkeGroup.com. It is prohibited for anyone else to disclose, copy, distribute or use the contents of this message. This material and any views expressed herein are provided for informational purposes only and should not be construed in any way as an endorsement or inducement to invest. Prices used in trade recommendations are already reflective of known information.



ZC-201812: Corn CBT (Elec) Dec 2018 @ CBOT (Daily bars)

www.TradeNavigator.com © 1999-2018



Disclaimer: Commodity trading and other speculative/ hedging investment practices involve substantial risk of loss. PAST RESULTS ARE NOT NECESSARILY INDICATIVE OF FUTURE RESULTS when utilizing the commodities markets. Gulke Group and its officers, directors, employees and affiliates may take positions for their own accounts that are the same or that are different to the positions and to the contracts referred to herein. This message contains information which may be confidential or privileged and is intended only for the individual or entity named above or the entity entitled to use a login/ password to www.GulkeGroup.com. It is prohibited for anyone else to disclose, copy, distribute or use the contents of this message. This material and any views expressed herein are provided for informational purposes only and should not be construed in any way as an endorsement or inducement to invest. Prices used in trade recommendations are already reflective of known information.



ZC-201807: Corn CBT (Elec) Jul 2018 @ CBOT (Daily bars)

www.TradeNavigator.com © 1999-2018



Disclaimer: Commodity trading and other speculative/ hedging investment practices involve substantial risk of loss. PAST RESULTS ARE NOT NECESSARILY INDICATIVE OF FUTURE RESULTS when utilizing the commodities markets. Gulke Group and its officers, directors, employees and affiliates may take positions for their own accounts that are the same or that are different to the positions and to the contracts referred to herein. This message contains information which may be confidential or privileged and is intended only for the individual or entity named above or the entity entitled to use a login/ password to www.GulkeGroup.com. It is prohibited for anyone else to disclose, copy, distribute or use the contents of this message. This material and any views expressed herein are provided for informational purposes only and should not be construed in any way as an endorsement or inducement to invest. Prices used in trade recommendations are already reflective of known information.



ZW-201807: Wheat CBT (Elec) Jul 2018 @ CBOT (Daily bars)

www.TradeNavigator.com © 1999-2018



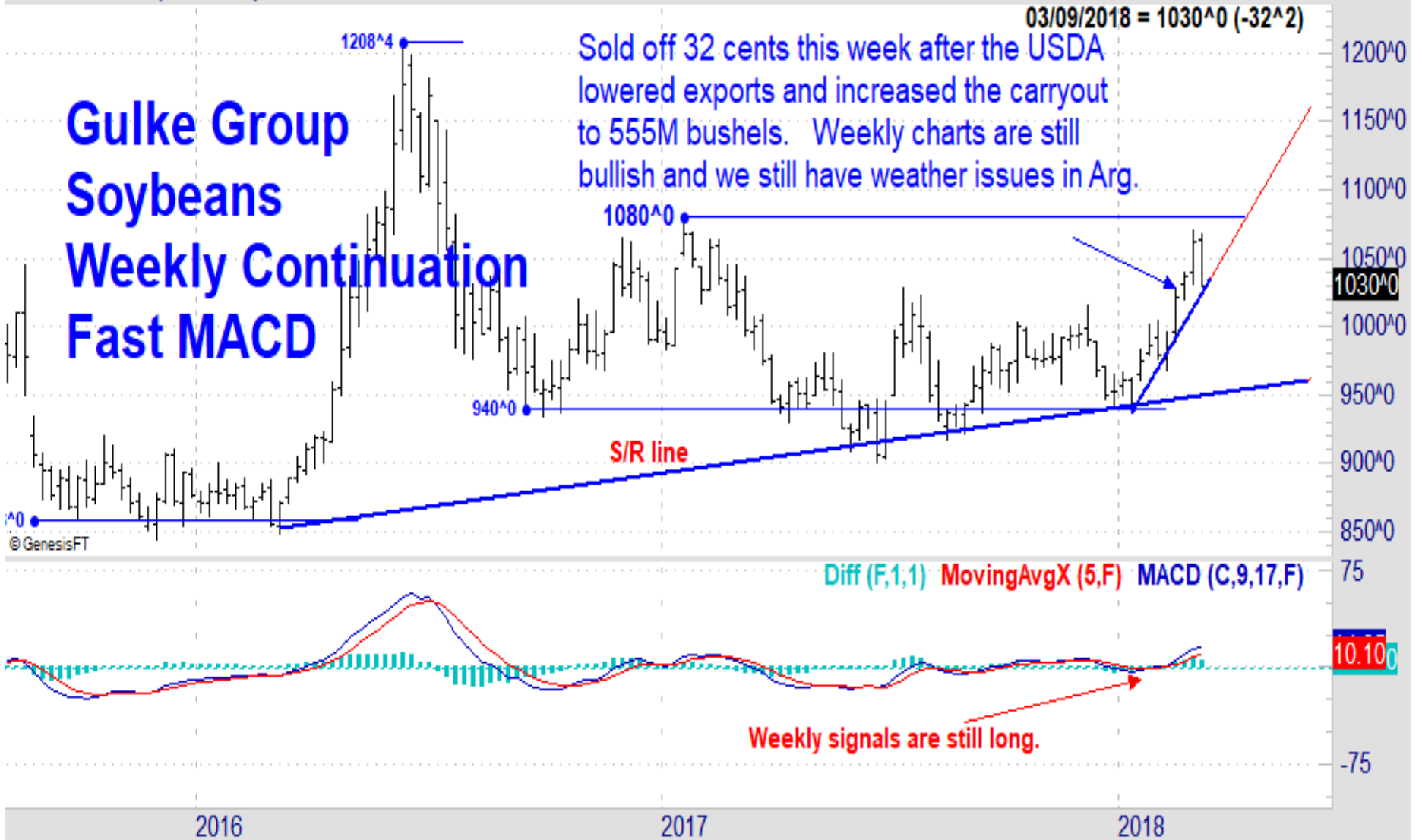
Disclaimer: Commodity trading and other speculative/ hedging investment practices involve substantial risk of loss. PAST RESULTS ARE NOT NECESSARILY INDICATIVE OF FUTURE RESULTS when utilizing the commodities markets. Gulke Group and its officers, directors, employees and affiliates may take positions for their own accounts that are the same or that are different to the positions and to the contracts referred to herein. This message contains information which may be confidential or privileged and is intended only for the individual or entity named above or the entity entitled to use a login/ password to www.GulkeGroup.com. It is prohibited for anyone else to disclose, copy, distribute or use the contents of this message. This material and any views expressed herein are provided for informational purposes only and should not be construed in any way as an endorsement or inducement to invest. Prices used in trade recommendations are already reflective of known information.

Fri 03/09/2018 (ZS-201803): O=1063^4 H=1068^0 L=1030^0 C=1030^0 TWofY=10

Gulke Group Soybeans Weekly Continuation Fast MACD

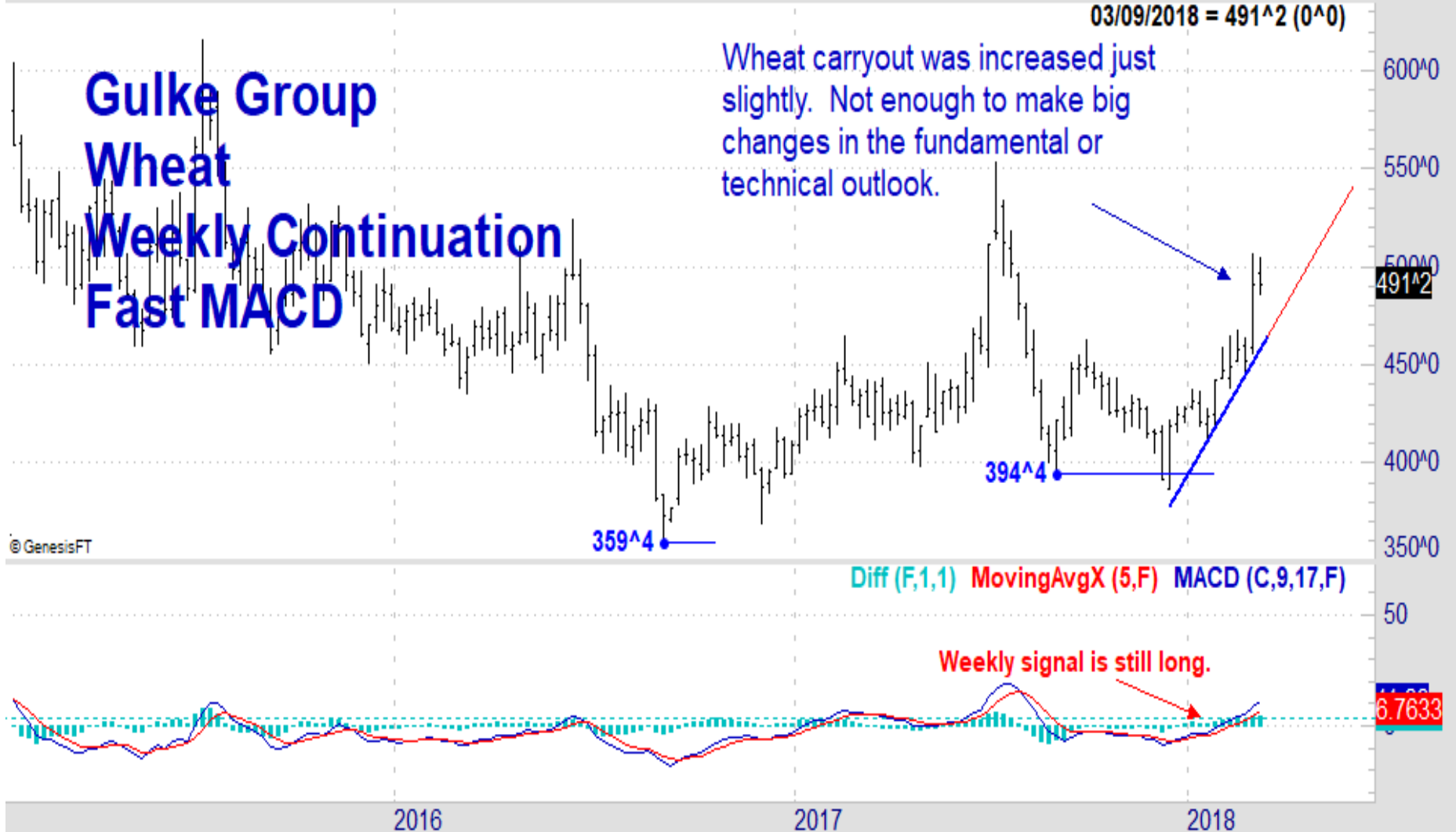
Sold off 32 cents this week after the USDA lowered exports and increased the carryout to 555M bushels. Weekly charts are still bullish and we still have weather issues in Arg.

03/09/2018 = 1030^0 (-32^2)



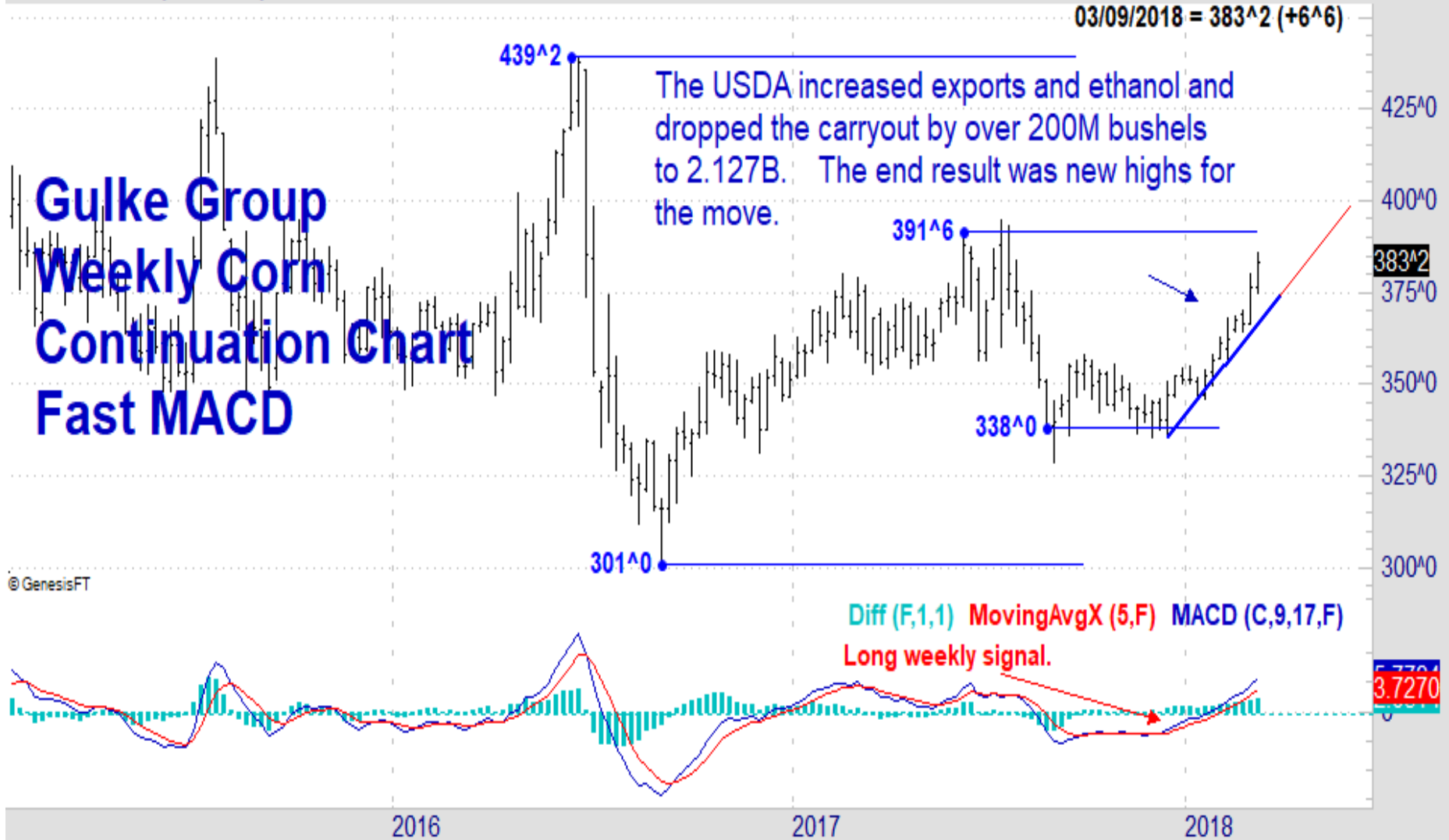
Disclaimer: Commodity trading and other speculative/ hedging investment practices involve substantial risk of loss. PAST RESULTS ARE NOT NECESSARILY INDICATIVE OF FUTURE RESULTS when utilizing the commodities markets. Gulke Group and its officers, directors, employees and affiliates may take positions for their own accounts that are the same or that are different to the positions and to the contracts referred to herein. This message contains information which may be confidential or privileged and is intended only for the individual or entity named above or the entity entitled to use a login/ password to www.GulkeGroup.com. It is prohibited for anyone else to disclose, copy, distribute or use the contents of this message. This material and any views expressed herein are provided for informational purposes only and should not be construed in any way as an endorsement or inducement to invest. Prices used in trade recommendations are already reflective of known information.

Fri 03/09/2018 (ZW-201803): O=497^0 H=505^0 L=486^0 C=491^2 TWofY=10



Disclaimer: Commodity trading and other speculative/ hedging investment practices involve substantial risk of loss. PAST RESULTS ARE NOT NECESSARILY INDICATIVE OF FUTURE RESULTS when utilizing the commodities markets. Gulke Group and its officers, directors, employees and affiliates may take positions for their own accounts that are the same or that are different to the positions and to the contracts referred to herein. This message contains information which may be confidential or privileged and is intended only for the individual or entity named above or the entity entitled to use a login/ password to www.GulkeGroup.com. It is prohibited for anyone else to disclose, copy, distribute or use the contents of this message. This material and any views expressed herein are provided for informational purposes only and should not be construed in any way as an endorsement or inducement to invest. Prices used in trade recommendations are already reflective of known information.

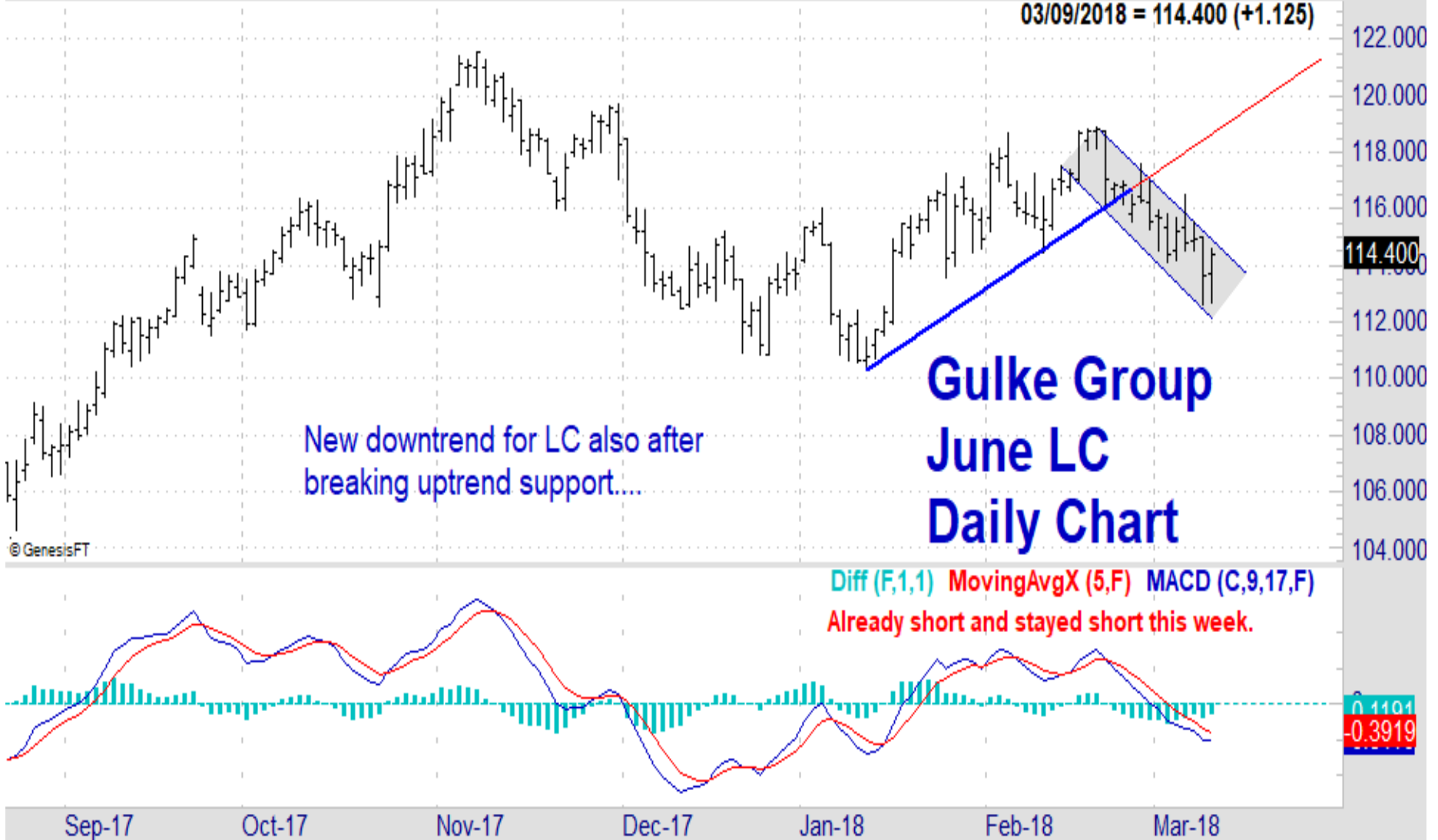
Gulke Group Weekly Corn Continuation Chart Fast MACD



Disclaimer: Commodity trading and other speculative/ hedging investment practices involve substantial risk of loss. PAST RESULTS ARE NOT NECESSARILY INDICATIVE OF FUTURE RESULTS when utilizing the commodities markets. Gulke Group and its officers, directors, employees and affiliates may take positions for their own accounts that are the same or that are different to the positions and to the contracts referred to herein. This message contains information which may be confidential or privileged and is intended only for the individual or entity named above or the entity entitled to use a login/ password to www.GulkeGroup.com. It is prohibited for anyone else to disclose, copy, distribute or use the contents of this message. This material and any views expressed herein are provided for informational purposes only and should not be construed in any way as an endorsement or inducement to invest. Prices used in trade recommendations are already reflective of known information.



Disclaimer: Commodity trading and other speculative/ hedging investment practices involve substantial risk of loss. PAST RESULTS ARE NOT NECESSARILY INDICATIVE OF FUTURE RESULTS when utilizing the commodities markets. Gulke Group and its officers, directors, employees and affiliates may take positions for their own accounts that are the same or that are different to the positions and to the contracts referred to herein. This message contains information which may be confidential or privileged and is intended only for the individual or entity named above or the entity entitled to use a login/ password to www.GulkeGroup.com. It is prohibited for anyone else to disclose, copy, distribute or use the contents of this message. This material and any views expressed herein are provided for informational purposes only and should not be construed in any way as an endorsement or inducement to invest. Prices used in trade recommendations are already reflective of known information.



Disclaimer: Commodity trading and other speculative/ hedging investment practices involve substantial risk of loss. PAST RESULTS ARE NOT NECESSARILY INDICATIVE OF FUTURE RESULTS when utilizing the commodities markets. Gulke Group and its officers, directors, employees and affiliates may take positions for their own accounts that are the same or that are different to the positions and to the contracts referred to herein. This message contains information which may be confidential or privileged and is intended only for the individual or entity named above or the entity entitled to use a login/ password to www.GulkeGroup.com. It is prohibited for anyone else to disclose, copy, distribute or use the contents of this message. This material and any views expressed herein are provided for informational purposes only and should not be construed in any way as an endorsement or inducement to invest. Prices used in trade recommendations are already reflective of known information.

Fri 03/09/2018: O=67.750 H=68.300 L=67.000 C=67.550 TDofM=7 TDofY=47

Gulke Group April Hogs Daily Chart Fast MACD

03/09/2018 = 67.550 (-0.525)

A bear flag (a short uptrend in a downtrending market -- flushing out the weaker short positions) as hog prices drifted to new lows for the move.

66.425

050
© GenesisFT

Diff (F,1,1) MovingAvgX (5,F) MACD (C,9,17,F)

Flat after the market stabilized at the new lows.

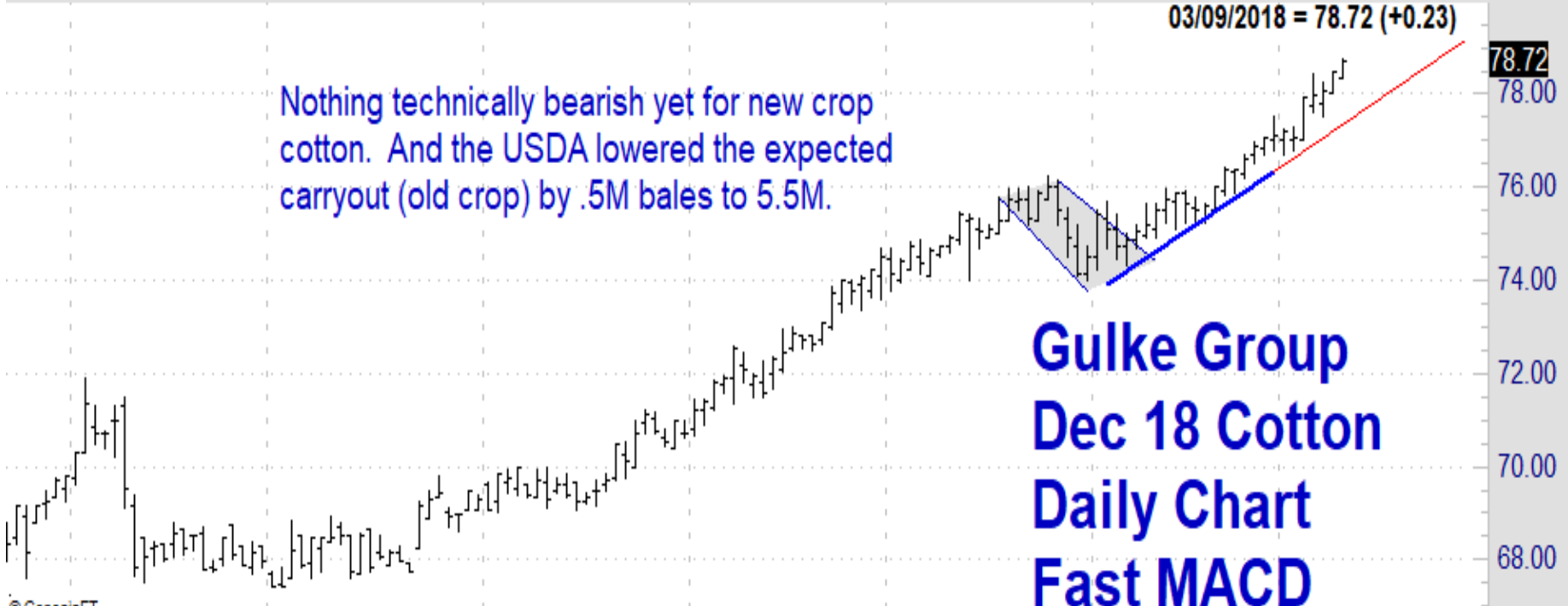
Sep-17 Oct-17 Nov-17 Dec-17 Jan-18 Feb-18 Mar-18

Disclaimer: Commodity trading and other speculative/ hedging investment practices involve substantial risk of loss. PAST RESULTS ARE NOT NECESSARILY INDICATIVE OF FUTURE RESULTS when utilizing the commodities markets. Gulke Group and its officers, directors, employees and affiliates may take positions for their own accounts that are the same or that are different to the positions and to the contracts referred to herein. This message contains information which may be confidential or privileged and is intended only for the individual or entity named above or the entity entitled to use a login/ password to www.GulkeGroup.com. It is prohibited for anyone else to disclose, copy, distribute or use the contents of this message. This material and any views expressed herein are provided for informational purposes only and should not be construed in any way as an endorsement or inducement to invest. Prices used in trade recommendations are already reflective of known information.

Fri 03/09/2018: O=78.35 H=78.74 L=78.35 C=78.72 TDofM=7 TDofY=47

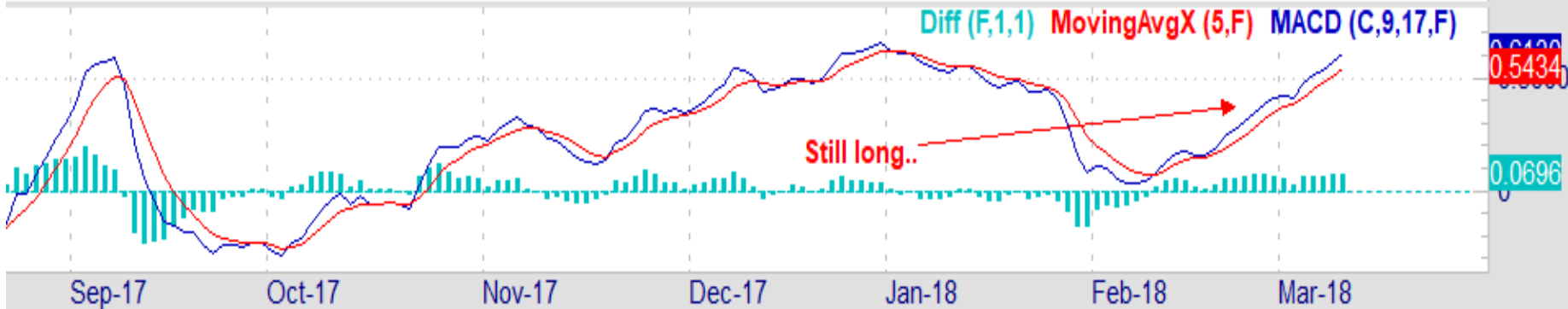
Nothing technically bearish yet for new crop cotton. And the USDA lowered the expected carryout (old crop) by .5M bales to 5.5M.

03/09/2018 = 78.72 (+0.23)



Gulke Group Dec 18 Cotton Daily Chart Fast MACD

© GenesisFT



Disclaimer: Commodity trading and other speculative/ hedging investment practices involve substantial risk of loss. PAST RESULTS ARE NOT NECESSARILY INDICATIVE OF FUTURE RESULTS when utilizing the commodities markets. Gulke Group and its officers, directors, employees and affiliates may take positions for their own accounts that are the same or that are different to the positions and to the contracts referred to herein. This message contains information which may be confidential or privileged and is intended only for the individual or entity named above or the entity entitled to use a login/ password to www.GulkeGroup.com. It is prohibited for anyone else to disclose, copy, distribute or use the contents of this message. This material and any views expressed herein are provided for informational purposes only and should not be construed in any way as an endorsement or inducement to invest. Prices used in trade recommendations are already reflective of known information.