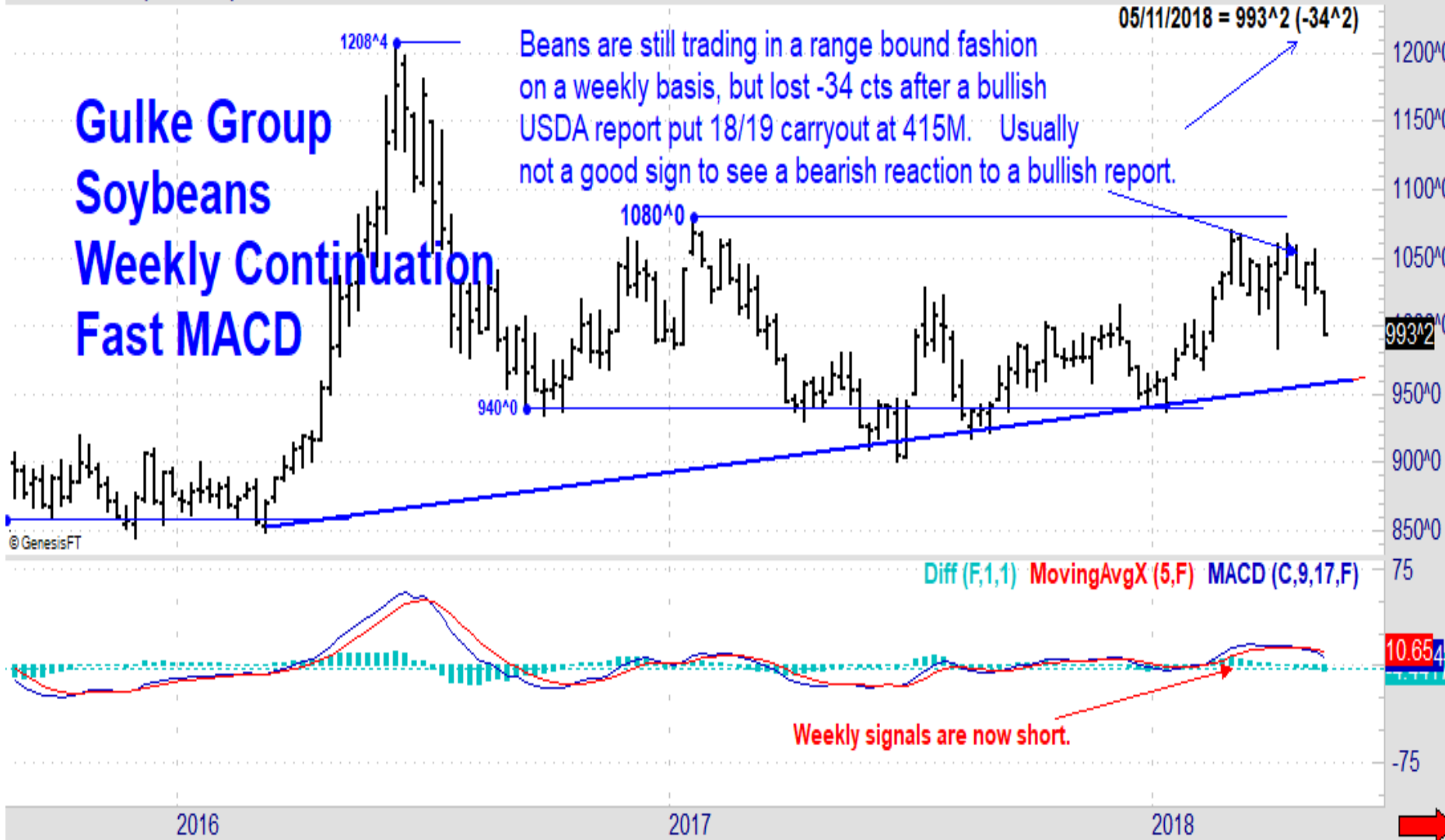


Fri 05/11/2018 (ZS-201805): O=1025^0 H=1025^0 L=993^2 C=993^2 TWofY=19

Gulke Group Soybeans Weekly Continuation Fast MACD

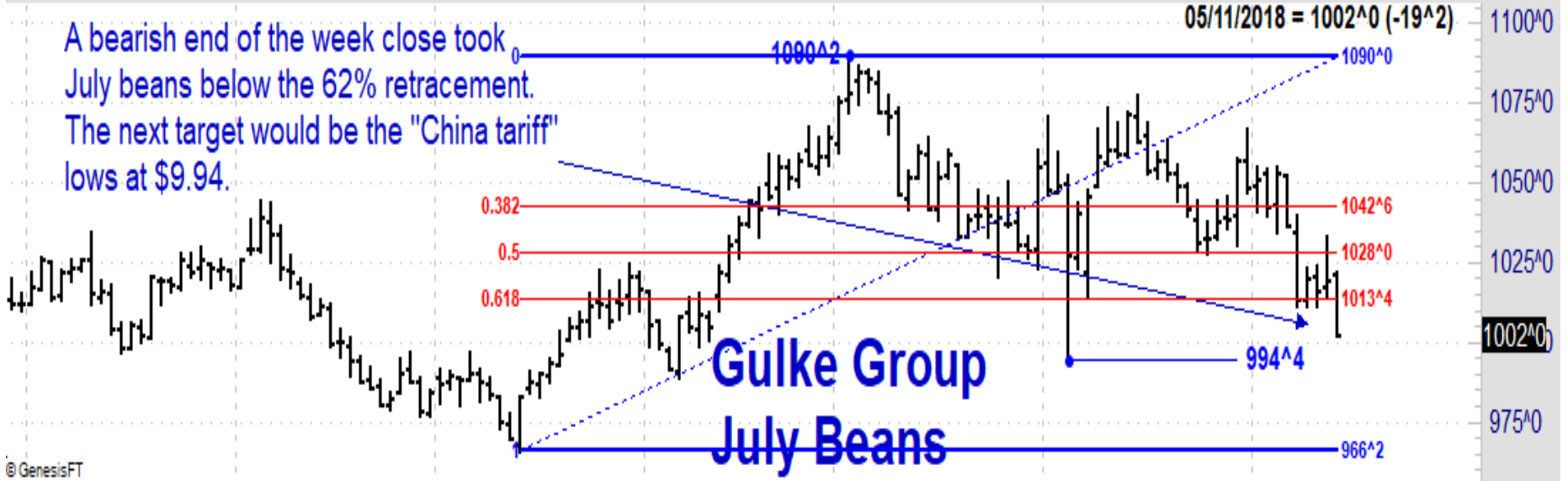
Beans are still trading in a range bound fashion on a weekly basis, but lost -34 cts after a bullish USDA report put 18/19 carryout at 415M. Usually not a good sign to see a bearish reaction to a bullish report.

05/11/2018 = 993^2 (-34^2)

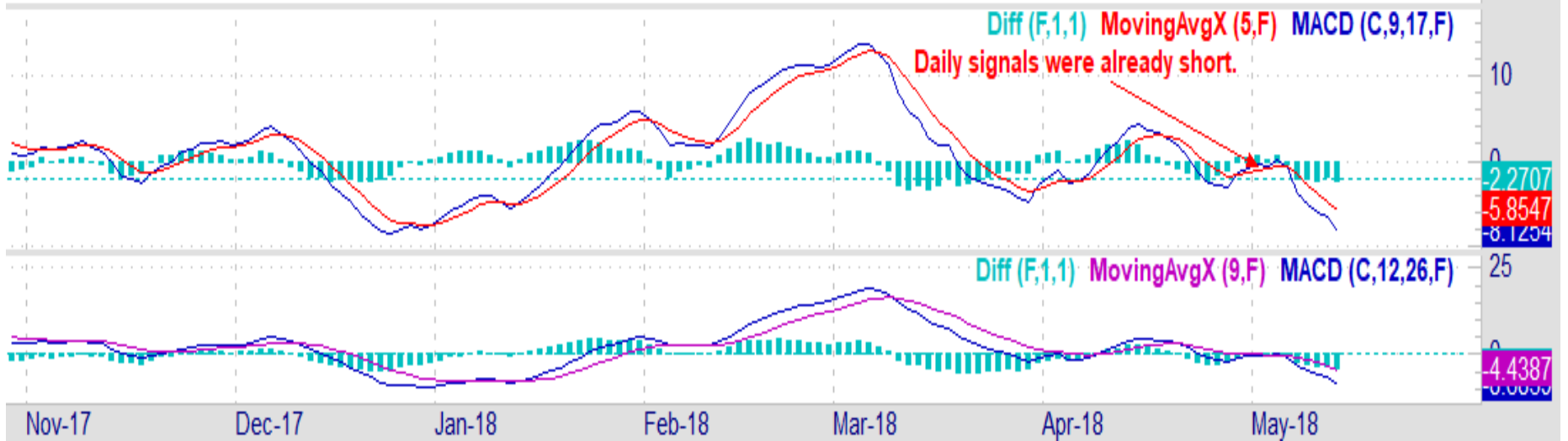


Disclaimer: Commodity trading and other speculative/ hedging investment practices involve substantial risk of loss. PAST RESULTS ARE NOT NECESSARILY INDICATIVE OF FUTURE RESULTS when utilizing the commodities markets. Gulke Group and its officers, directors, employees and affiliates may take positions for their own accounts that are the same or that are different to the positions and to the contracts referred to herein. This message contains information which may be confidential or privileged and is intended only for the individual or entity named above or the entity entitled to use a login/ password to www.GulkeGroup.com. It is prohibited for anyone else to disclose, copy, distribute or use the contents of this message. This material and any views expressed herein are provided for informational purposes only and should not be construed in any way as an endorsement or inducement to invest. Prices used in trade recommendations are already reflective of known information.

Fri 05/11/2018: O=1021^0 H=1022^4 L=1002^0 C=1002^0 TDofM=9 TDofY=91



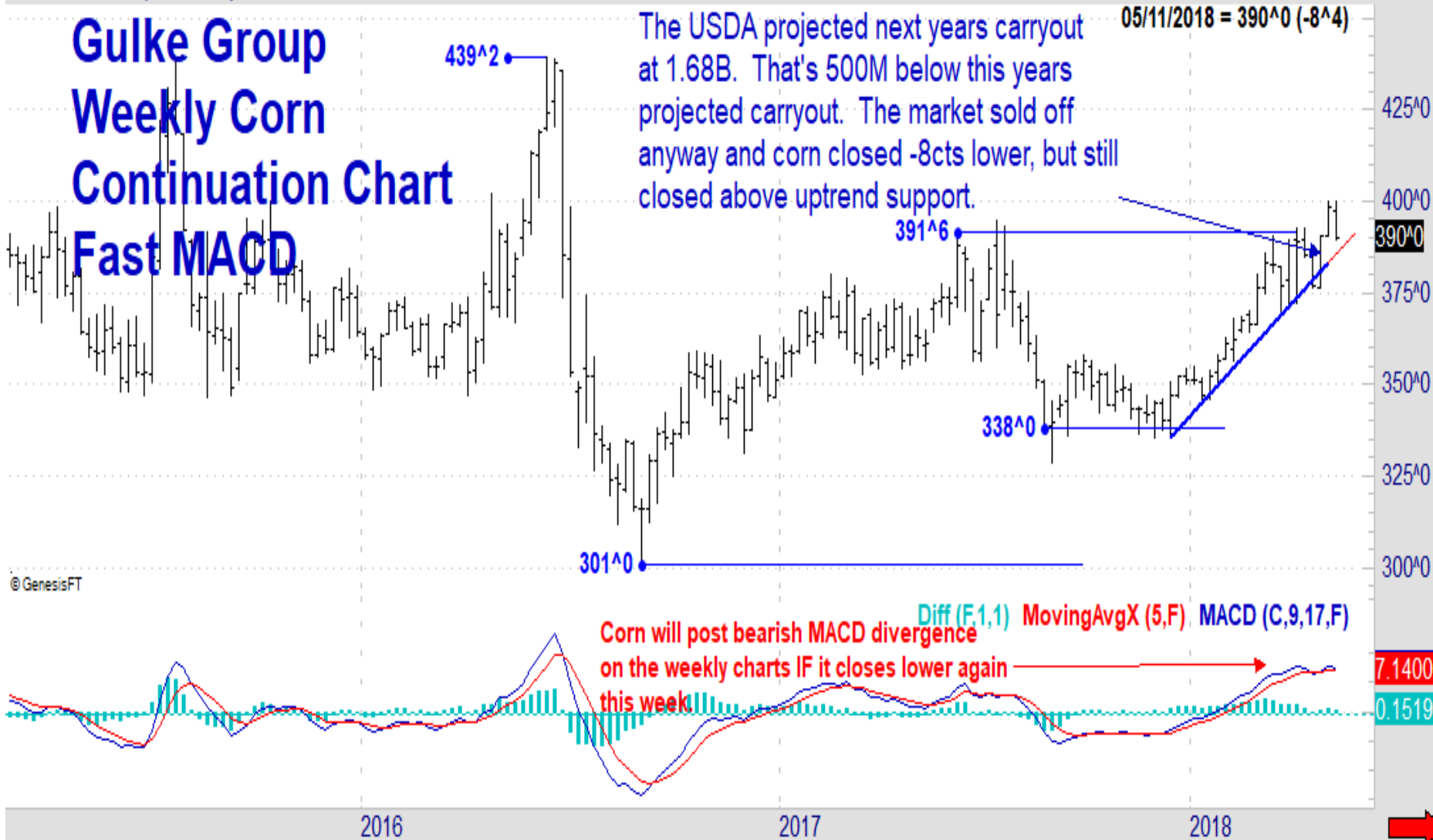
© GenesisFT



Disclaimer: Commodity trading and other speculative/ hedging investment practices involve substantial risk of loss. PAST RESULTS ARE NOT NECESSARILY INDICATIVE OF FUTURE RESULTS when utilizing the commodities markets. Gulke Group and its officers, directors, employees and affiliates may take positions for their own accounts that are the same or that are different to the positions and to the contracts referred to herein. This message contains information which may be confidential or privileged and is intended only for the individual or entity named above or the entity entitled to use a login/ password to www.GulkeGroup.com. It is prohibited for anyone else to disclose, copy, distribute or use the contents of this message. This material and any views expressed herein are provided for informational purposes only and should not be construed in any way as an endorsement or inducement to invest. Prices used in trade recommendations are already reflective of known information.

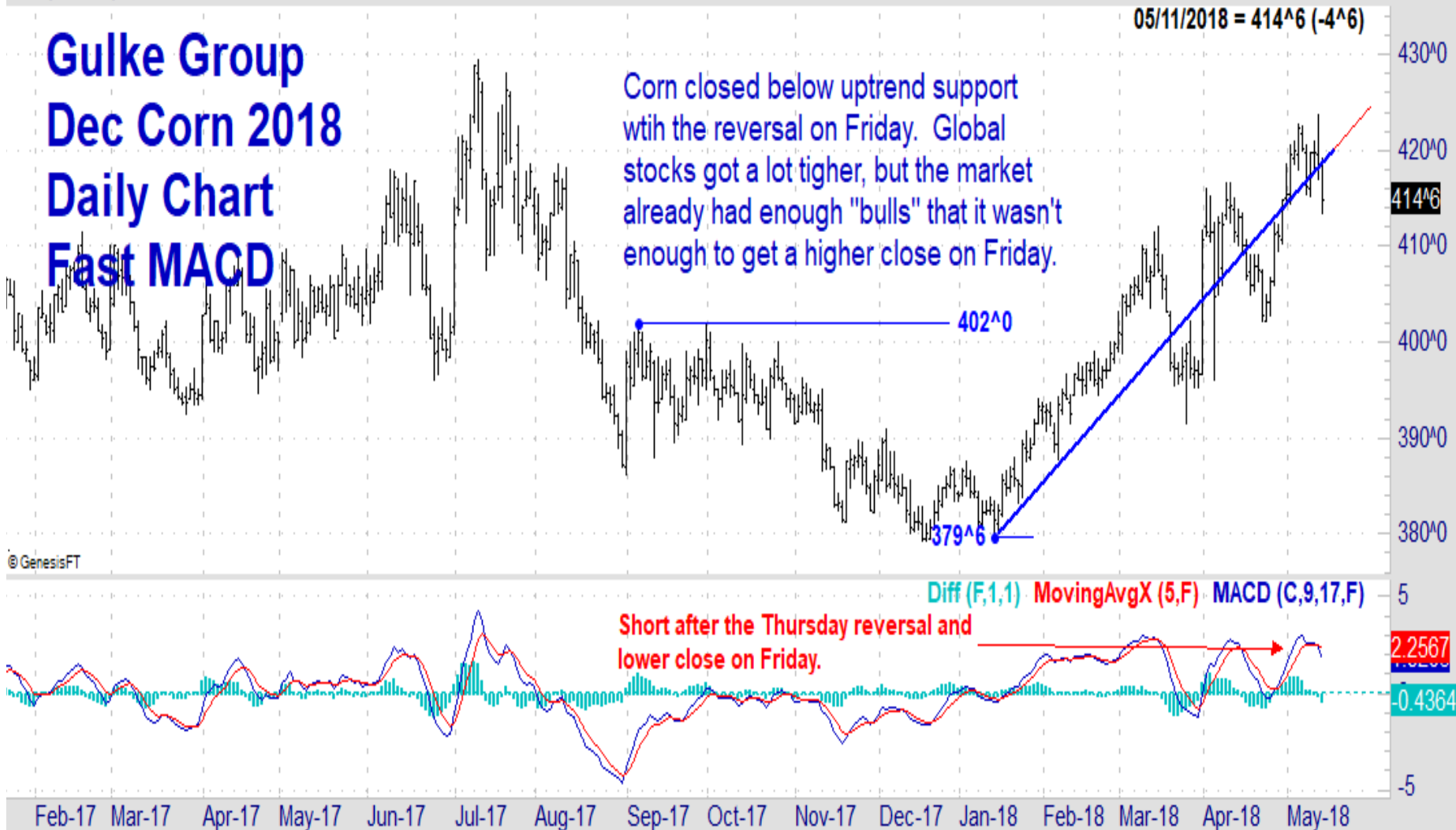
Fri 05/11/2018 (ZC-201805): O=397^2 H=399^6 L=389^6 C=390^0 TWofY=19

Gulke Group Weekly Corn Continuation Chart Fast MACD



Disclaimer: Commodity trading and other speculative/ hedging investment practices involve substantial risk of loss. PAST RESULTS ARE NOT NECESSARILY INDICATIVE OF FUTURE RESULTS when utilizing the commodities markets. Gulke Group and its officers, directors, employees and affiliates may take positions for their own accounts that are the same or that are different to the positions and to the contracts referred to herein. This message contains information which may be confidential or privileged and is intended only for the individual or entity named above or the entity entitled to use a login/ password to www.GulkeGroup.com. It is prohibited for anyone else to disclose, copy, distribute or use the contents of this message. This material and any views expressed herein are provided for informational purposes only and should not be construed in any way as an endorsement or inducement to invest. Prices used in trade recommendations are already reflective of known information.

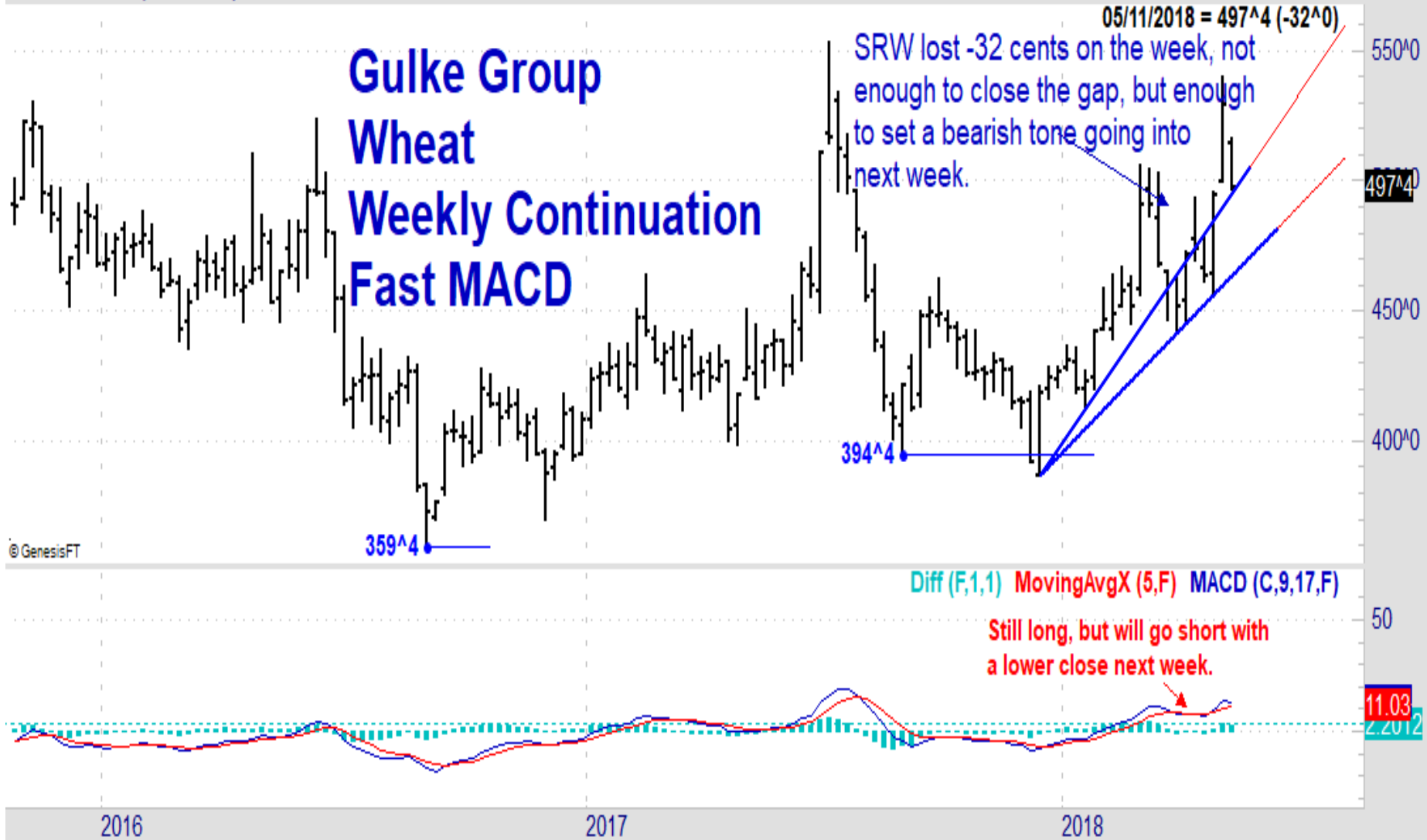
Gulke Group Dec Corn 2018 Daily Chart Fast MACD



Disclaimer: Commodity trading and other speculative/ hedging investment practices involve substantial risk of loss. PAST RESULTS ARE NOT NECESSARILY INDICATIVE OF FUTURE RESULTS when utilizing the commodities markets. Gulke Group and its officers, directors, employees and affiliates may take positions for their own accounts that are the same or that are different to the positions and to the contracts referred to herein. This message contains information which may be confidential or privileged and is intended only for the individual or entity named above or the entity entitled to use a login/ password to www.GulkeGroup.com. It is prohibited for anyone else to disclose, copy, distribute or use the contents of this message. This material and any views expressed herein are provided for informational purposes only and should not be construed in any way as an endorsement or inducement to invest. Prices used in trade recommendations are already reflective of known information.

Fri 05/11/2018 (ZW-201807): O=515^0 H=516^4 L=497^0 C=497^4 TWofY=19

Gulke Group Wheat Weekly Continuation Fast MACD

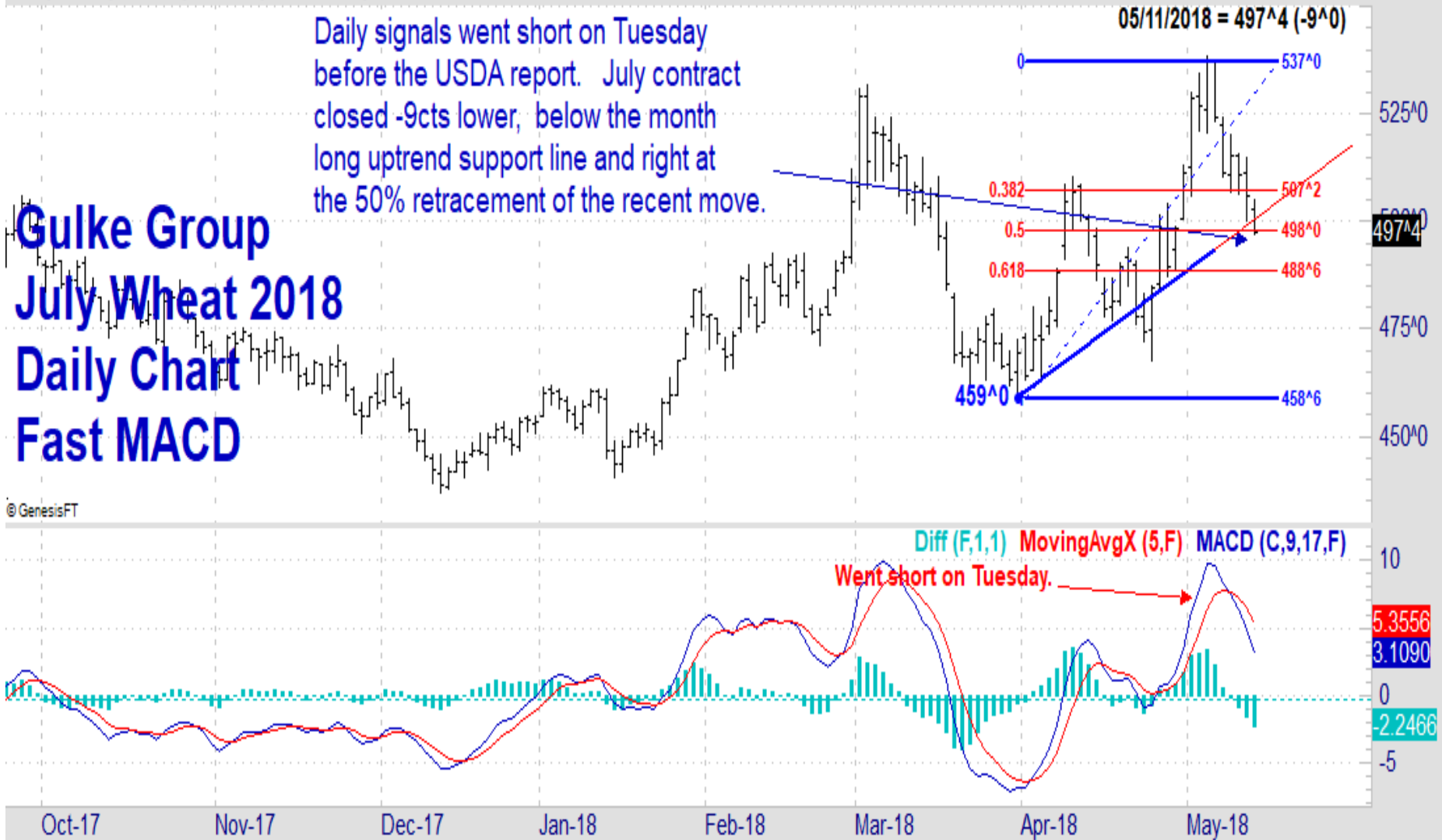


Disclaimer: Commodity trading and other speculative/ hedging investment practices involve substantial risk of loss. PAST RESULTS ARE NOT NECESSARILY INDICATIVE OF FUTURE RESULTS when utilizing the commodities markets. Gulke Group and its officers, directors, employees and affiliates may take positions for their own accounts that are the same or that are different to the positions and to the contracts referred to herein. This message contains information which may be confidential or privileged and is intended only for the individual or entity named above or the entity entitled to use a login/ password to www.GulkeGroup.com. It is prohibited for anyone else to disclose, copy, distribute or use the contents of this message. This material and any views expressed herein are provided for informational purposes only and should not be construed in any way as an endorsement or inducement to invest. Prices used in trade recommendations are already reflective of known information.

Fri 05/11/2018: O=502^6 H=505^2 L=497^0 C=497^4 TDofM=9 TDofY=91

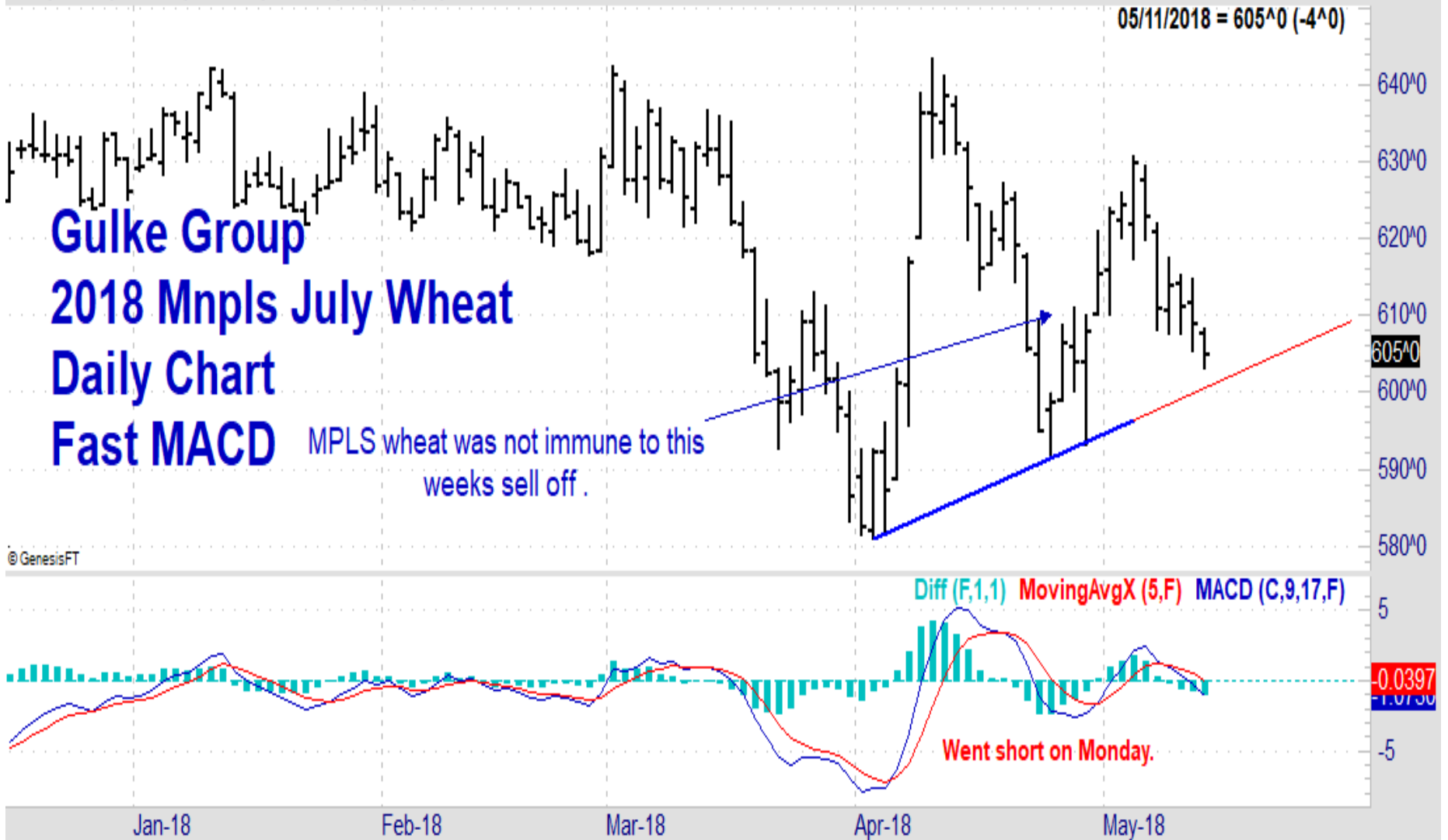
Gulke Group July Wheat 2018 Daily Chart Fast MACD

Daily signals went short on Tuesday before the USDA report. July contract closed -9cts lower, below the month long uptrend support line and right at the 50% retracement of the recent move.



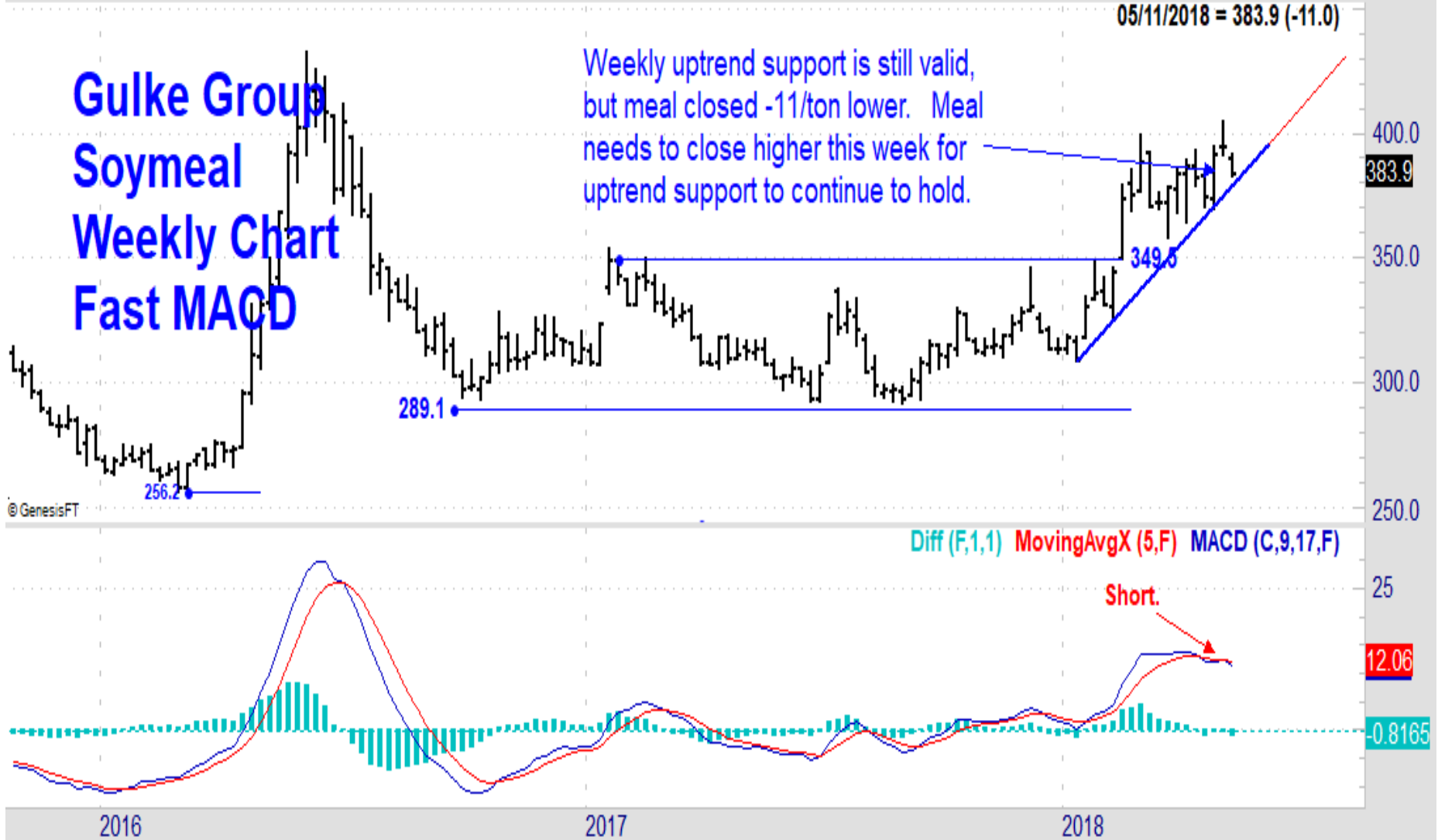
Disclaimer: Commodity trading and other speculative/ hedging investment practices involve substantial risk of loss. PAST RESULTS ARE NOT NECESSARILY INDICATIVE OF FUTURE RESULTS when utilizing the commodities markets. Gulke Group and its officers, directors, employees and affiliates may take positions for their own accounts that are the same or that are different to the positions and to the contracts referred to herein. This message contains information which may be confidential or privileged and is intended only for the individual or entity named above or the entity entitled to use a login/ password to www.GulkeGroup.com. It is prohibited for anyone else to disclose, copy, distribute or use the contents of this message. This material and any views expressed herein are provided for informational purposes only and should not be construed in any way as an endorsement or inducement to invest. Prices used in trade recommendations are already reflective of known information.

Fri 05/11/2018: O=607^6 H=608^2 L=603^0 C=605^0 TDofM=9 TDofY=91



Disclaimer: Commodity trading and other speculative/ hedging investment practices involve substantial risk of loss. PAST RESULTS ARE NOT NECESSARILY INDICATIVE OF FUTURE RESULTS when utilizing the commodities markets. Gulke Group and its officers, directors, employees and affiliates may take positions for their own accounts that are the same or that are different to the positions and to the contracts referred to herein. This message contains information which may be confidential or privileged and is intended only for the individual or entity named above or the entity entitled to use a login/ password to www.GulkeGroup.com. It is prohibited for anyone else to disclose, copy, distribute or use the contents of this message. This material and any views expressed herein are provided for informational purposes only and should not be construed in any way as an endorsement or inducement to invest. Prices used in trade recommendations are already reflective of known information.

Fri 05/11/2018 (ZM-201805): O=389.6 H=391.8 L=382.6 C=383.9 TWofY=19



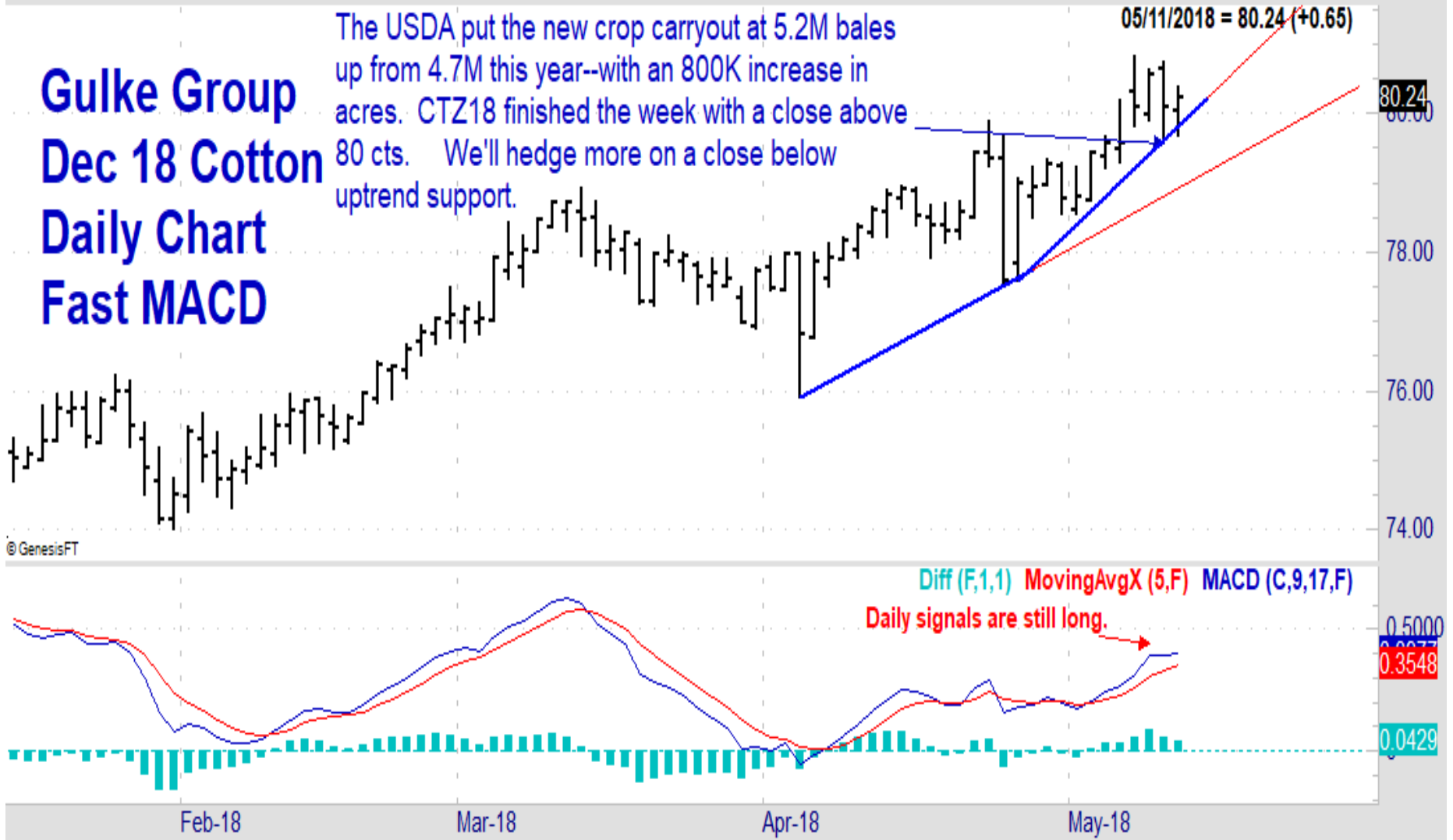
Disclaimer: Commodity trading and other speculative/ hedging investment practices involve substantial risk of loss. PAST RESULTS ARE NOT NECESSARILY INDICATIVE OF FUTURE RESULTS when utilizing the commodities markets. Gulke Group and its officers, directors, employees and affiliates may take positions for their own accounts that are the same or that are different to the positions and to the contracts referred to herein. This message contains information which may be confidential or privileged and is intended only for the individual or entity named above or the entity entitled to use a login/ password to www.GulkeGroup.com. It is prohibited for anyone else to disclose, copy, distribute or use the contents of this message. This material and any views expressed herein are provided for informational purposes only and should not be construed in any way as an endorsement or inducement to invest. Prices used in trade recommendations are already reflective of known information.

Fri 05/11/2018: O=80.04 H=80.40 L=79.68 C=80.24 TDofM=8 TDofY=90

Gulke Group Dec 18 Cotton Daily Chart Fast MACD

The USDA put the new crop carryout at 5.2M bales up from 4.7M this year--with an 800K increase in acres. CTZ18 finished the week with a close above 80 cts. We'll hedge more on a close below uptrend support.

05/11/2018 = 80.24 (+0.65)



© GenesisFT

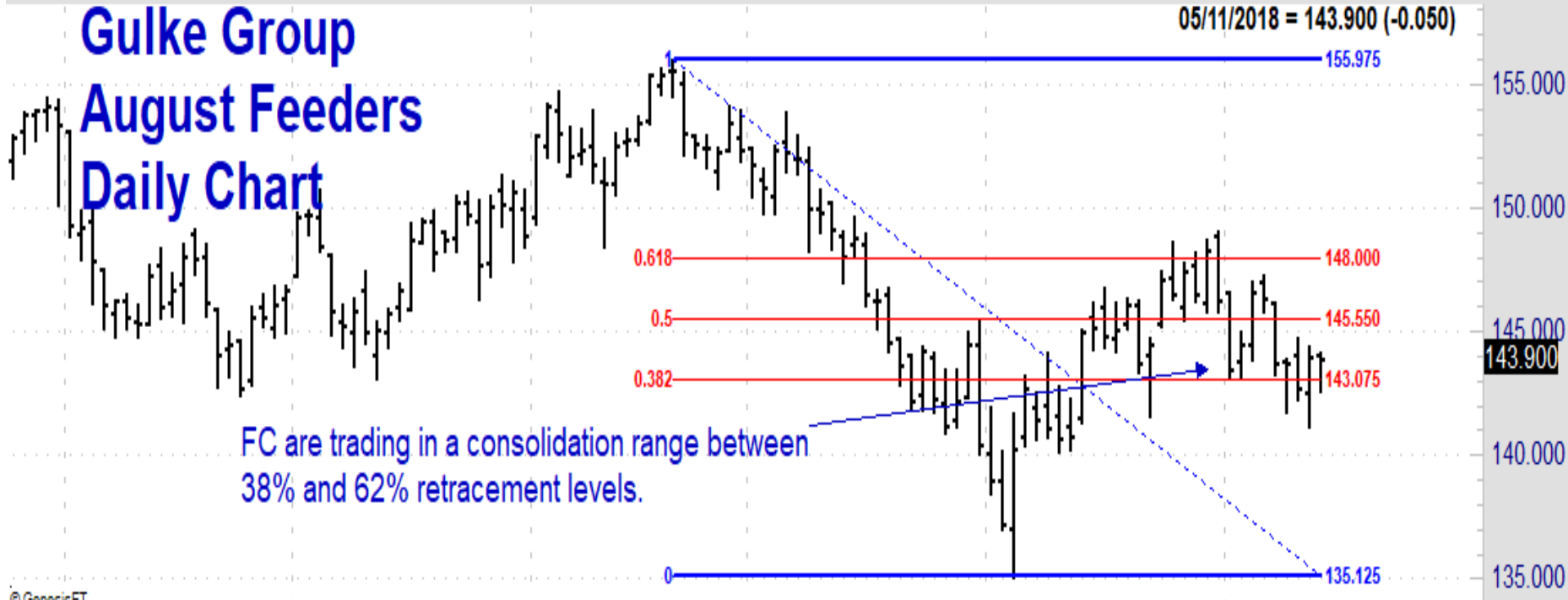
Diff (F,1,1) MovingAvgX (5,F) MACD (C,9,17,F)
Daily signals are still long.

80.24
80.00
78.00
76.00
74.00
0.5000
0.3548
0.0429

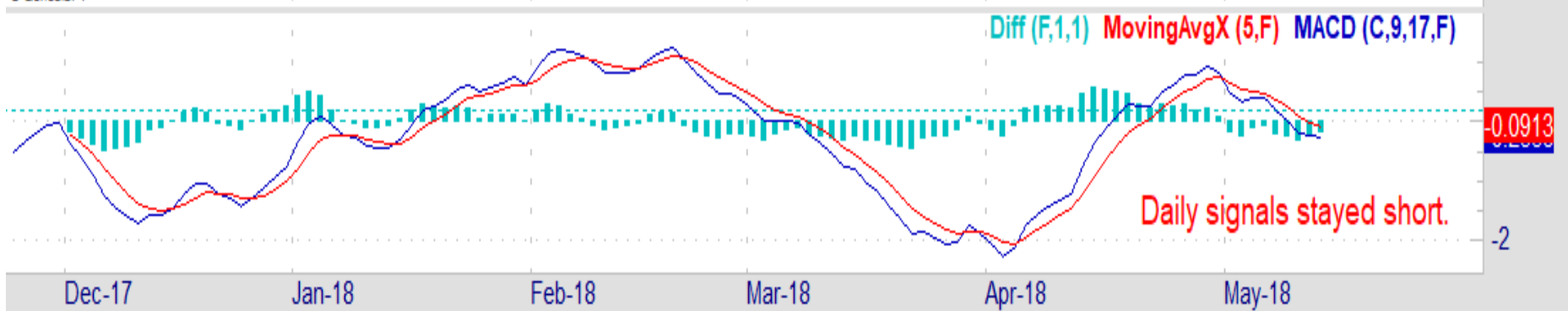
Disclaimer: Commodity trading and other speculative/ hedging investment practices involve substantial risk of loss. PAST RESULTS ARE NOT NECESSARILY INDICATIVE OF FUTURE RESULTS when utilizing the commodities markets. Gulke Group and its officers, directors, employees and affiliates may take positions for their own accounts that are the same or that are different to the positions and to the contracts referred to herein. This message contains information which may be confidential or privileged and is intended only for the individual or entity named above or the entity entitled to use a login/ password to www.GulkeGroup.com. It is prohibited for anyone else to disclose, copy, distribute or use the contents of this message. This material and any views expressed herein are provided for informational purposes only and should not be construed in any way as an endorsement or inducement to invest. Prices used in trade recommendations are already reflective of known information.

Fri 05/11/2018: O=144.000 H=144.200 L=142.575 C=143.900 TDofM=9 TDofY=91

Gulke Group August Feeders Daily Chart



© GenesisFT

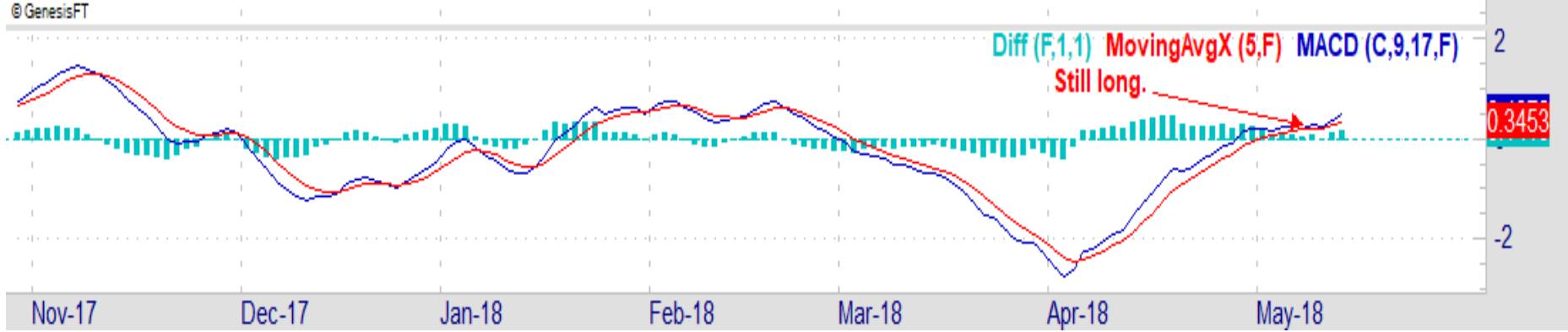


Disclaimer: Commodity trading and other speculative/ hedging investment practices involve substantial risk of loss. PAST RESULTS ARE NOT NECESSARILY INDICATIVE OF FUTURE RESULTS when utilizing the commodities markets. Gulke Group and its officers, directors, employees and affiliates may take positions for their own accounts that are the same or that are different to the positions and to the contracts referred to herein. This message contains information which may be confidential or privileged and is intended only for the individual or entity named above or the entity entitled to use a login/ password to www.GulkeGroup.com. It is prohibited for anyone else to disclose, copy, distribute or use the contents of this message. This material and any views expressed herein are provided for informational purposes only and should not be construed in any way as an endorsement or inducement to invest. Prices used in trade recommendations are already reflective of known information.

Fri 05/11/2018: O=107.850 H=108.050 L=106.150 C=107.750 TDofM=9 TDofY=91

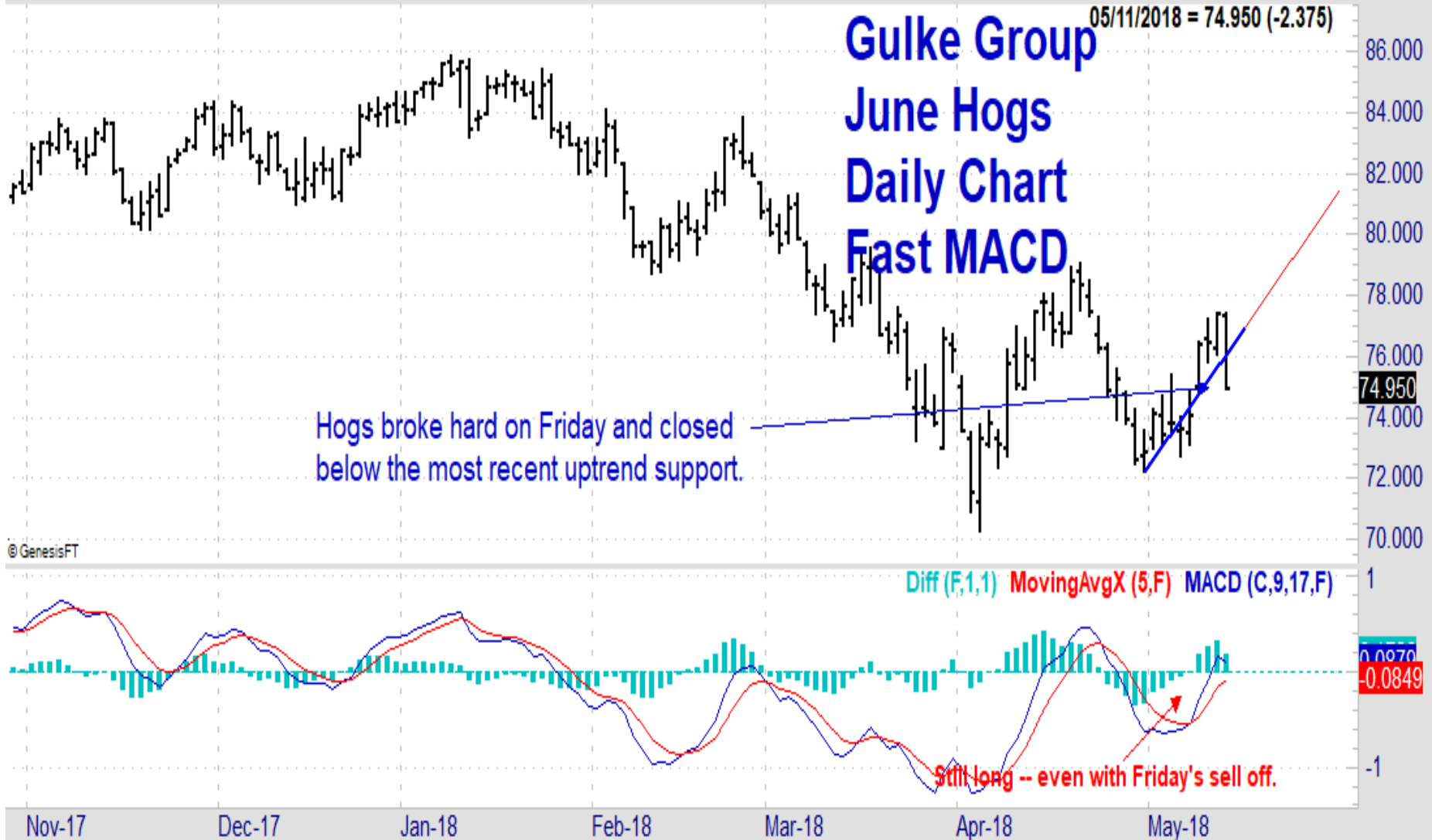
Gulke Group June LC Daily Chart Fast MACD

LC never did manage to break above 50% retracement at \$108.15.



Disclaimer: Commodity trading and other speculative/ hedging investment practices involve substantial risk of loss. PAST RESULTS ARE NOT NECESSARILY INDICATIVE OF FUTURE RESULTS when utilizing the commodities markets. Gulke Group and its officers, directors, employees and affiliates may take positions for their own accounts that are the same or that are different to the positions and to the contracts referred to herein. This message contains information which may be confidential or privileged and is intended only for the individual or entity named above or the entity entitled to use a login/ password to www.GulkeGroup.com. It is prohibited for anyone else to disclose, copy, distribute or use the contents of this message. This material and any views expressed herein are provided for informational purposes only and should not be construed in any way as an endorsement or inducement to invest. Prices used in trade recommendations are already reflective of known information.

Fri 05/11/2018: O=77.350 H=77.475 L=74.900 C=74.950 TDofM=9 TDofY=91



Disclaimer: Commodity trading and other speculative/ hedging investment practices involve substantial risk of loss. PAST RESULTS ARE NOT NECESSARILY INDICATIVE OF FUTURE RESULTS when utilizing the commodities markets. Gulke Group and its officers, directors, employees and affiliates may take positions for their own accounts that are the same or that are different to the positions and to the contracts referred to herein. This message contains information which may be confidential or privileged and is intended only for the individual or entity named above or the entity entitled to use a login/ password to www.GulkeGroup.com. It is prohibited for anyone else to disclose, copy, distribute or use the contents of this message. This material and any views expressed herein are provided for informational purposes only and should not be construed in any way as an endorsement or inducement to invest. Prices used in trade recommendations are already reflective of known information.

Disclaimer: Commodity trading and other speculative/ hedging investment practices involve substantial risk of loss. PAST RESULTS ARE NOT NECESSARILY INDICATIVE OF FUTURE RESULTS when utilizing the commodities markets. Gulke Group and its officers, directors, employees and affiliates may take positions for their own accounts that are the same or that are different to the positions and to the contracts referred to herein. This message contains information which may be confidential or privileged and is intended only for the individual or entity named above or the entity entitled to use a login/ password to www.GulkeGroup.com. It is prohibited for anyone else to disclose, copy, distribute or use the contents of this message. This material and any views expressed herein are provided for informational purposes only and should not be construed in any way as an endorsement or inducement to invest. Prices used in trade recommendations are already reflective of known information.