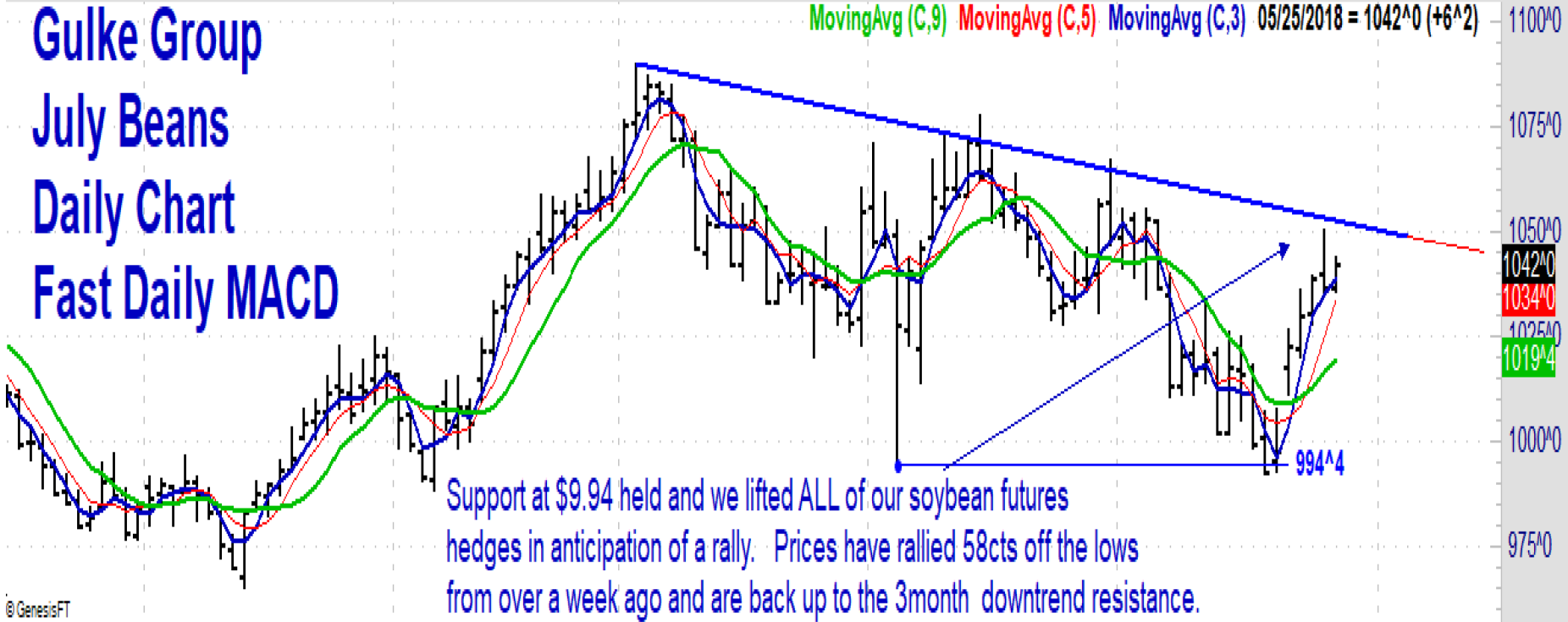


Fri 05/25/2018: O=1036^6 H=1044^0 L=1035^4 C=1042^0 MovingAvg= 1039^2 MovingAvg= 1034^0 MovingAvg= 1019^4 TDoF=19 TDoF=101

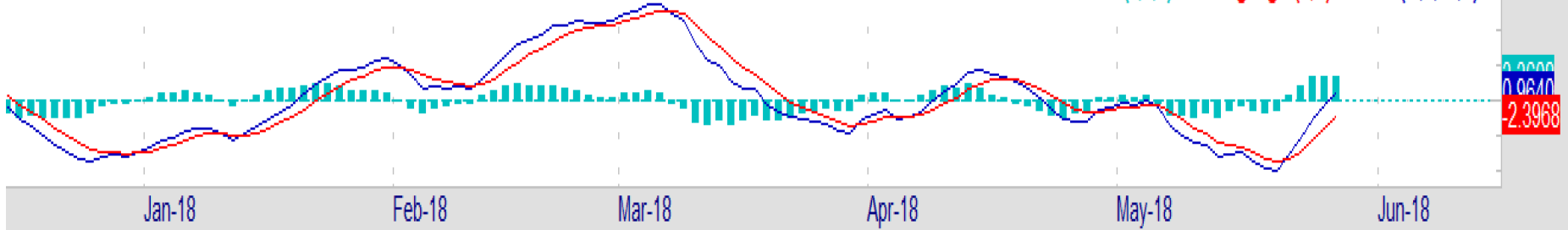
Gulke Group July Beans Daily Chart Fast Daily MACD

MovingAvg (C,9) MovingAvg (C,5) MovingAvg (C,3) 05/25/2018 = 1042^0 (+6^2)



© GenesisFT

Diff (F,1,1) MovingAvgX (5,F) MACD (C,9,17,F)



Disclaimer: Commodity trading and other speculative/ hedging investment practices involve substantial risk of loss. PAST RESULTS ARE NOT NECESSARILY INDICATIVE OF FUTURE RESULTS when utilizing the commodities markets. Gulke Group and its officers, directors, employees and affiliates may take positions for their own accounts that are the same or that are different to the positions and to the contracts referred to herein. This message contains information which may be confidential or privileged and is intended only for the individual or entity named above or the entity entitled to use a login/ password to www.GulkeGroup.com. It is prohibited for anyone else to disclose, copy, distribute or use the contents of this message. This material and any views expressed herein are provided for informational purposes only and should not be construed in any way as an endorsement or inducement to invest. Prices used in trade recommendations are already reflective of known information.

Fri 05/25/2018 (ZS-201807): O=1017^4 H=1050^6 L=1011^4 C=1042^0 TWofY=21

Gulke Group Soybeans Weekly Continuation Fast MACD



Disclaimer: Commodity trading and other speculative/ hedging investment practices involve substantial risk of loss. PAST RESULTS ARE NOT NECESSARILY INDICATIVE OF FUTURE RESULTS when utilizing the commodities markets. Gulke Group and its officers, directors, employees and affiliates may take positions for their own accounts that are the same or that are different to the positions and to the contracts referred to herein. This message contains information which may be confidential or privileged and is intended only for the individual or entity named above or the entity entitled to use a login/ password to www.GulkeGroup.com. It is prohibited for anyone else to disclose, copy, distribute or use the contents of this message. This material and any views expressed herein are provided for informational purposes only and should not be construed in any way as an endorsement or inducement to invest. Prices used in trade recommendations are already reflective of known information.

Fri 05/25/2018: O=404^0 H=406^6 L=403^2 C=406^4 MovingAvg= 406^2 MovingAvg= 405^0 MovingAvg= 402^4 TdofM=19 TdofY=101

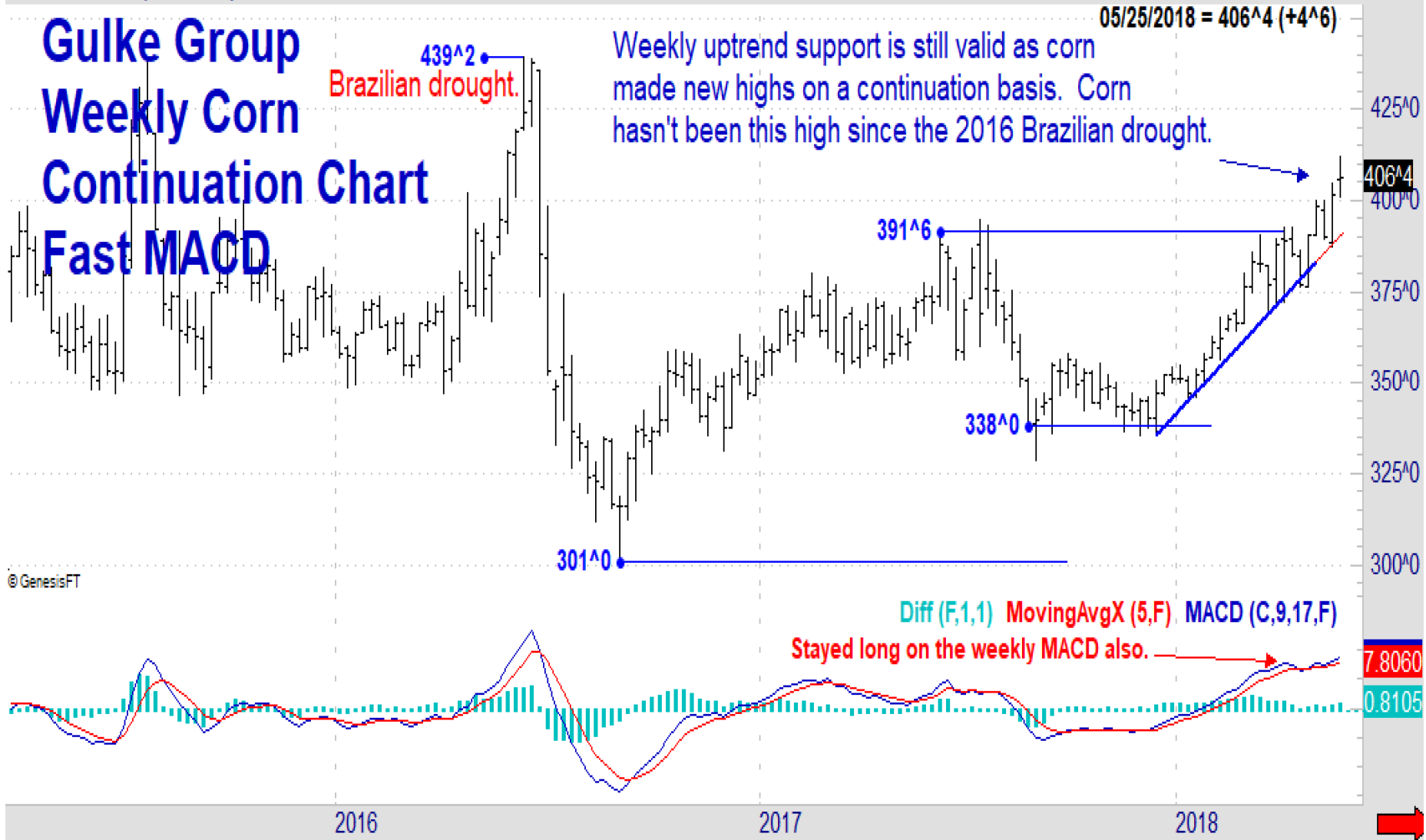
Gulke Group 2018 July Corn Daily Chart 3,5,9 day and Fast MACD

Old crop corn surged to new highs and managed to close the week above \$4.00. We have been bullish corn for quite a while. We still have 50% of our old crop supplies unsold and almost all of our new crop unhedged.



Disclaimer: Commodity trading and other speculative/ hedging investment practices involve substantial risk of loss. PAST RESULTS ARE NOT NECESSARILY INDICATIVE OF FUTURE RESULTS when utilizing the commodities markets. Gulke Group and its officers, directors, employees and affiliates may take positions for their own accounts that are the same or that are different to the positions and to the contracts referred to herein. This message contains information which may be confidential or privileged and is intended only for the individual or entity named above or the entity entitled to use a login/ password to www.GulkeGroup.com. It is prohibited for anyone else to disclose, copy, distribute or use the contents of this message. This material and any views expressed herein are provided for informational purposes only and should not be construed in any way as an endorsement or inducement to invest. Prices used in trade recommendations are already reflective of known information.

Gulke Group Weekly Corn Continuation Chart Fast MACD



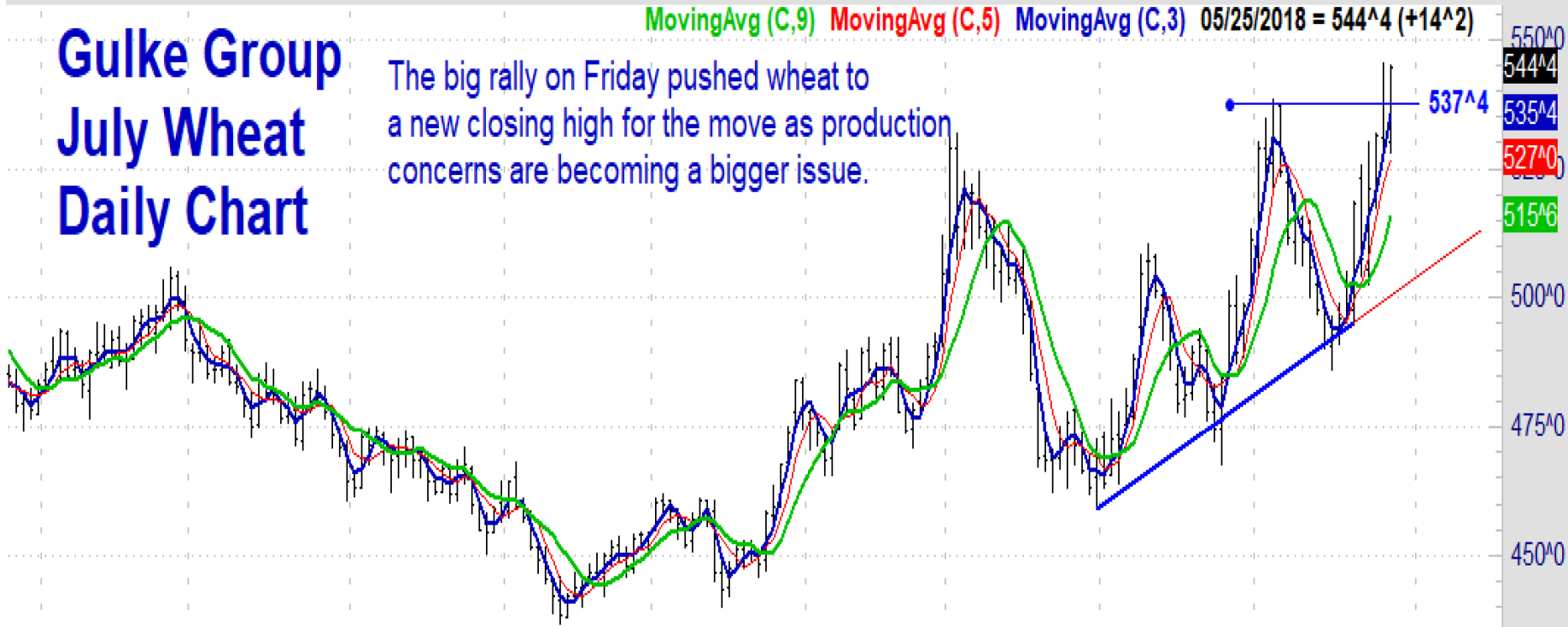
Disclaimer: Commodity trading and other speculative/ hedging investment practices involve substantial risk of loss. PAST RESULTS ARE NOT NECESSARILY INDICATIVE OF FUTURE RESULTS when utilizing the commodities markets. Gulke Group and its officers, directors, employees and affiliates may take positions for their own accounts that are the same or that are different to the positions and to the contracts referred to herein. This message contains information which may be confidential or privileged and is intended only for the individual or entity named above or the entity entitled to use a login/ password to www.GulkeGroup.com. It is prohibited for anyone else to disclose, copy, distribute or use the contents of this message. This material and any views expressed herein are provided for informational purposes only and should not be construed in any way as an endorsement or inducement to invest. Prices used in trade recommendations are already reflective of known information.

Tue 05/29/2018: TDofM=20 TDofY=102

Gulke Group July Wheat Daily Chart

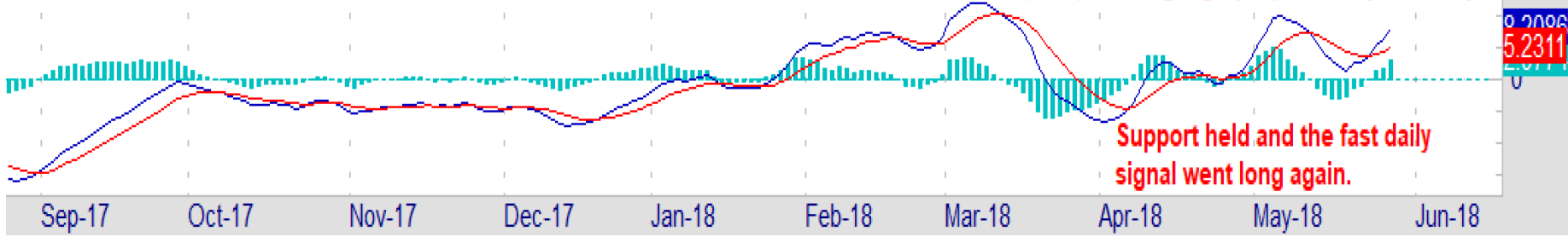
The big rally on Friday pushed wheat to a new closing high for the move as production concerns are becoming a bigger issue.

MovingAvg (C,9) MovingAvg (C,5) MovingAvg (C,3) 05/25/2018 = 544^4 (+14^2)



© GenesisFT

Diff (F,1,1) MovingAvgX (9,F) MACD (C,12,25,F)



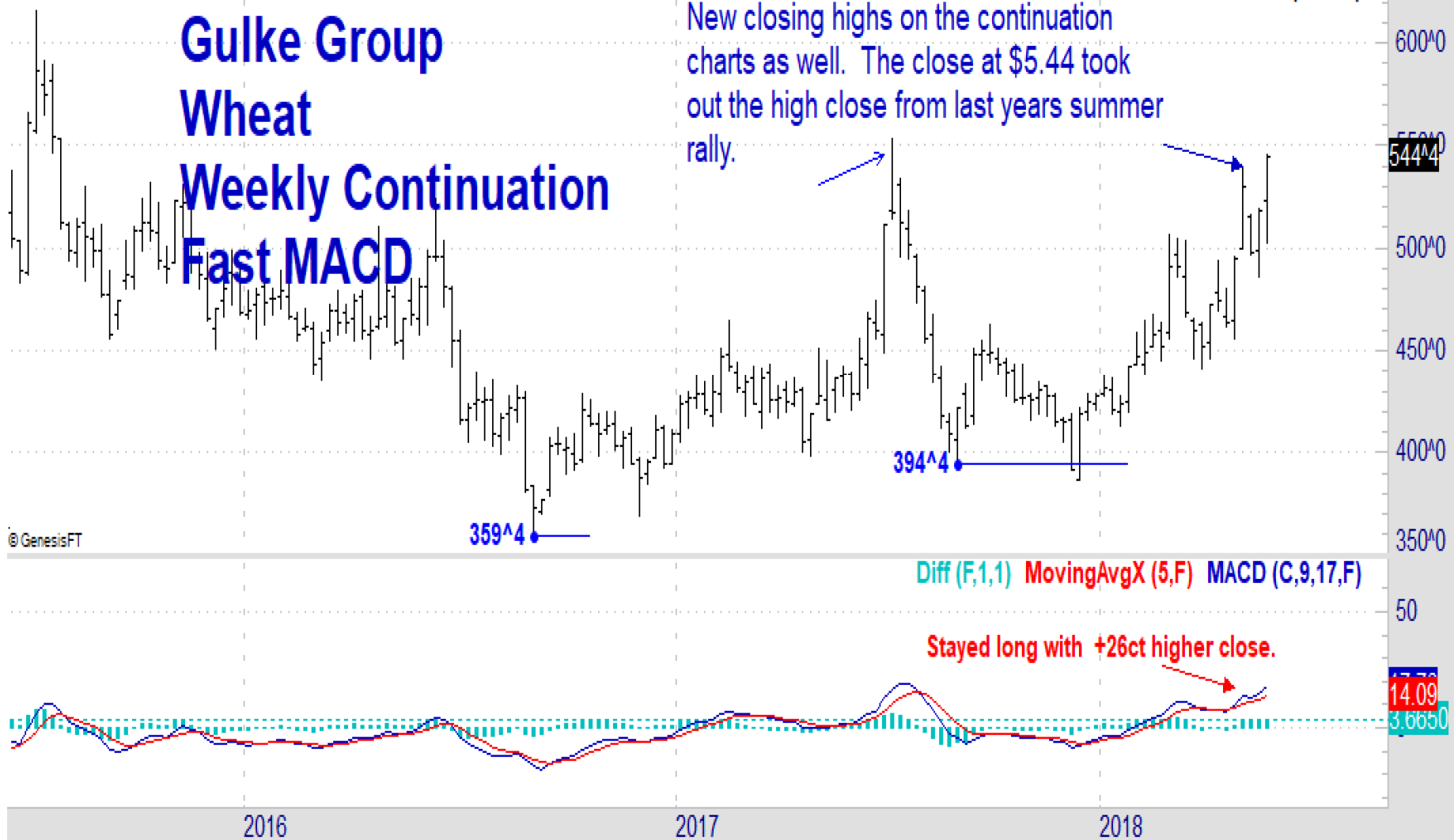
Disclaimer: Commodity trading and other speculative/ hedging investment practices involve substantial risk of loss. PAST RESULTS ARE NOT NECESSARILY INDICATIVE OF FUTURE RESULTS when utilizing the commodities markets. Gulke Group and its officers, directors, employees and affiliates may take positions for their own accounts that are the same or that are different to the positions and to the contracts referred to herein. This message contains information which may be confidential or privileged and is intended only for the individual or entity named above or the entity entitled to use a login/ password to www.GulkeGroup.com. It is prohibited for anyone else to disclose, copy, distribute or use the contents of this message. This material and any views expressed herein are provided for informational purposes only and should not be construed in any way as an endorsement or inducement to invest. Prices used in trade recommendations are already reflective of known information.

Fri 05/25/2018 (ZW-201807): O=523^0 H=545^2 L=502^6 C=544^4 TWofY=21

Gulke Group Wheat Weekly Continuation Fast MACD

New closing highs on the continuation charts as well. The close at \$5.44 took out the high close from last years summer rally.

05/25/2018 = 544^4 (+26^2)



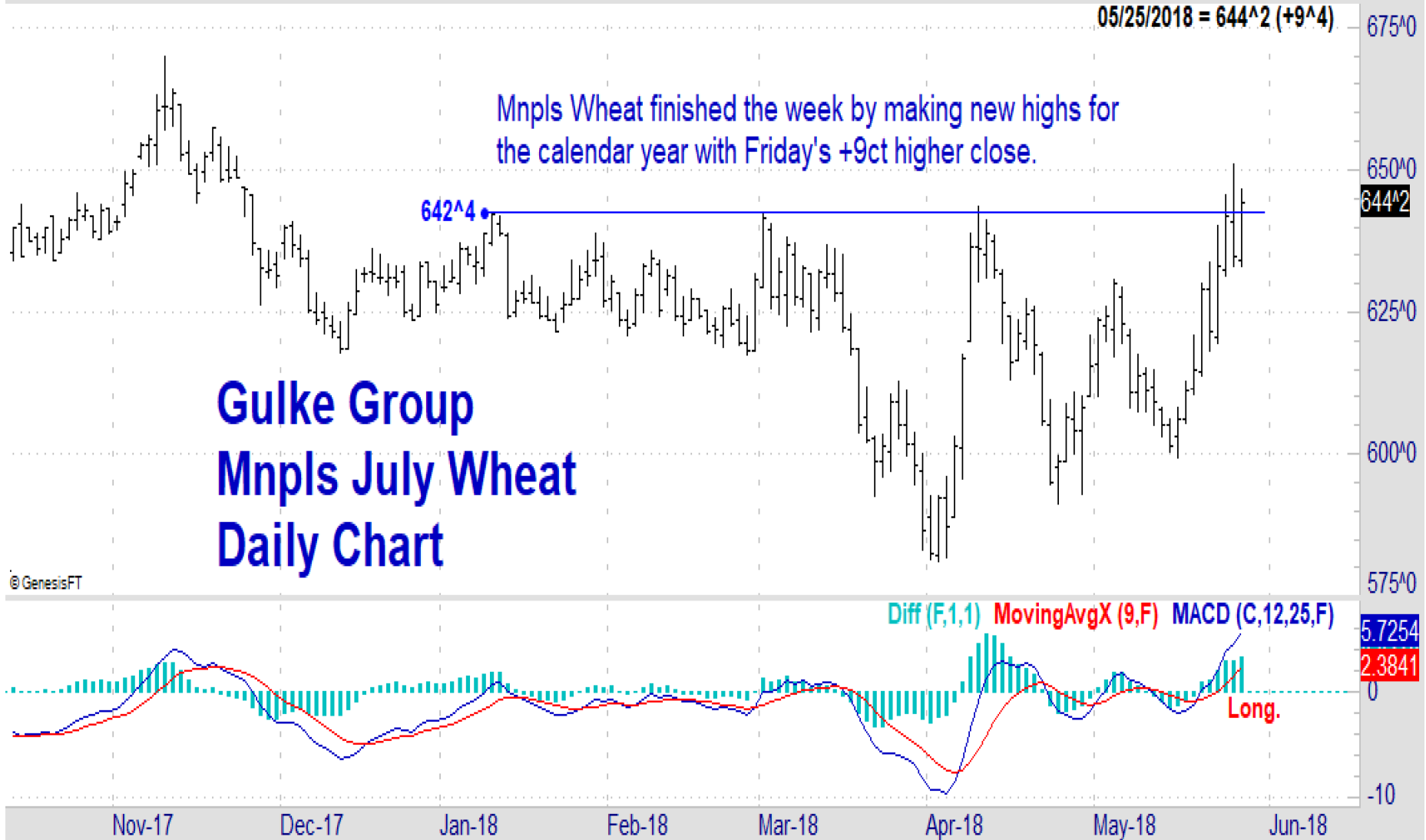
© GenesisFT

Diff (F,1,1) MovingAvgX (5,F) MACD (C,9,17,F)

Stayed long with +26ct higher close.

Disclaimer: Commodity trading and other speculative/ hedging investment practices involve substantial risk of loss. PAST RESULTS ARE NOT NECESSARILY INDICATIVE OF FUTURE RESULTS when utilizing the commodities markets. Gulke Group and its officers, directors, employees and affiliates may take positions for their own accounts that are the same or that are different to the positions and to the contracts referred to herein. This message contains information which may be confidential or privileged and is intended only for the individual or entity named above or the entity entitled to use a login/ password to www.GulkeGroup.com. It is prohibited for anyone else to disclose, copy, distribute or use the contents of this message. This material and any views expressed herein are provided for informational purposes only and should not be construed in any way as an endorsement or inducement to invest. Prices used in trade recommendations are already reflective of known information.

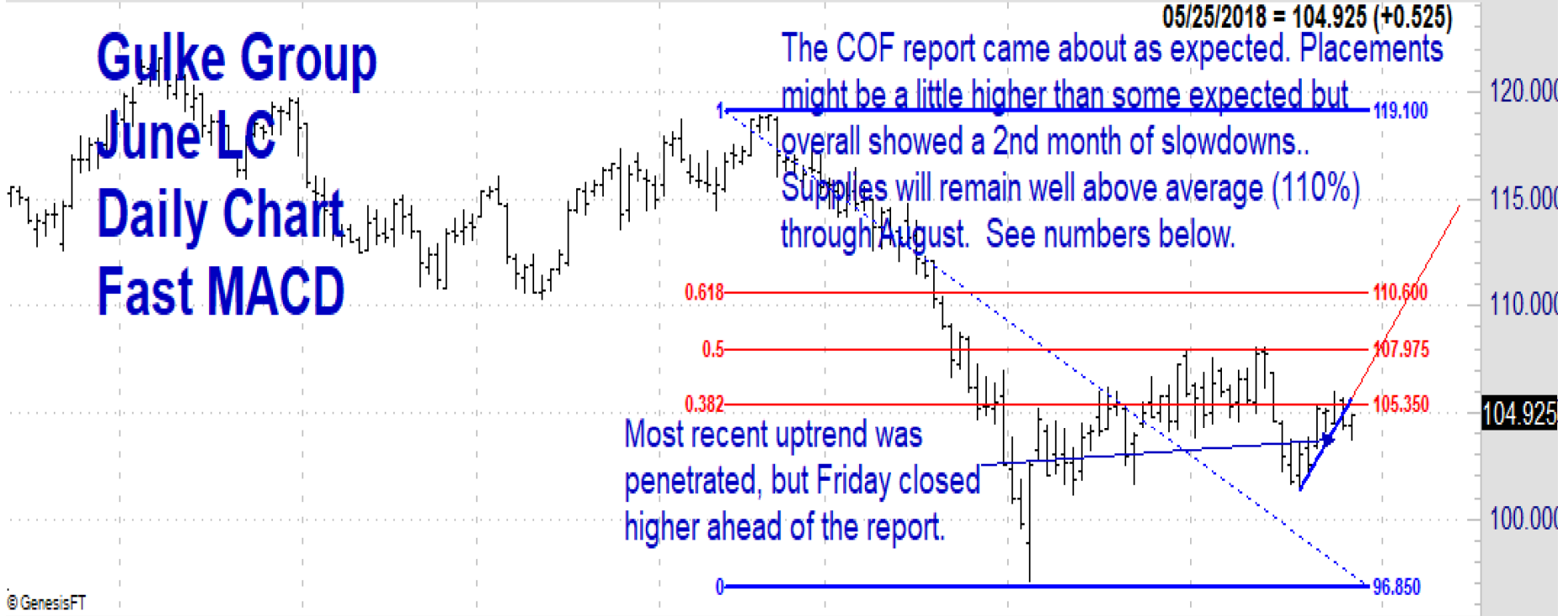
Fri 05/25/2018: O=634^0 H=646^4 L=633^0 C=644^2 TDofM=19 TDofY=101



Disclaimer: Commodity trading and other speculative/ hedging investment practices involve substantial risk of loss. PAST RESULTS ARE NOT NECESSARILY INDICATIVE OF FUTURE RESULTS when utilizing the commodities markets. Gulke Group and its officers, directors, employees and affiliates may take positions for their own accounts that are the same or that are different to the positions and to the contracts referred to herein. This message contains information which may be confidential or privileged and is intended only for the individual or entity named above or the entity entitled to use a login/ password to www.GulkeGroup.com. It is prohibited for anyone else to disclose, copy, distribute or use the contents of this message. This material and any views expressed herein are provided for informational purposes only and should not be construed in any way as an endorsement or inducement to invest. Prices used in trade recommendations are already reflective of known information.

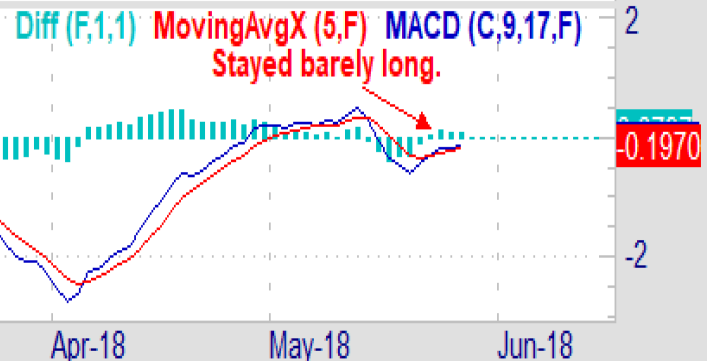
Fri 05/25/2018: O=104.400 H=104.950 L=103.725 C=104.925 TDofM=19 TDofY=101

Gulke Group June LC Daily Chart Fast MACD



© GenesisFT

Item	Number		Percent of previous year
	2017 (1,000 head)	2018 (1,000 head)	
On feed April 1	10,919	11,729	107
Placed on feed during April	1,848	1,695	92
Fed cattle marketed during April	1,703	1,803	106
Other disappearance during April	66	63	95
On feed May 1	10,998	11,558	105

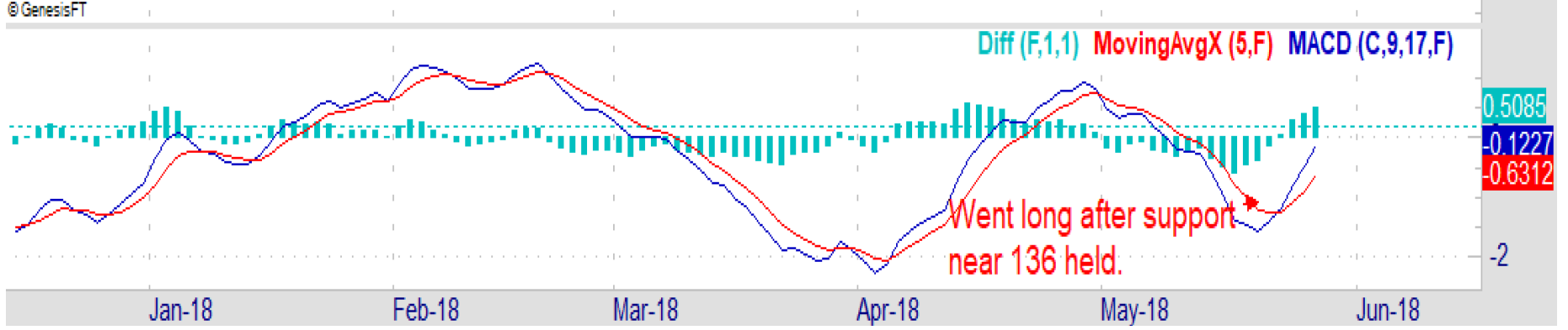
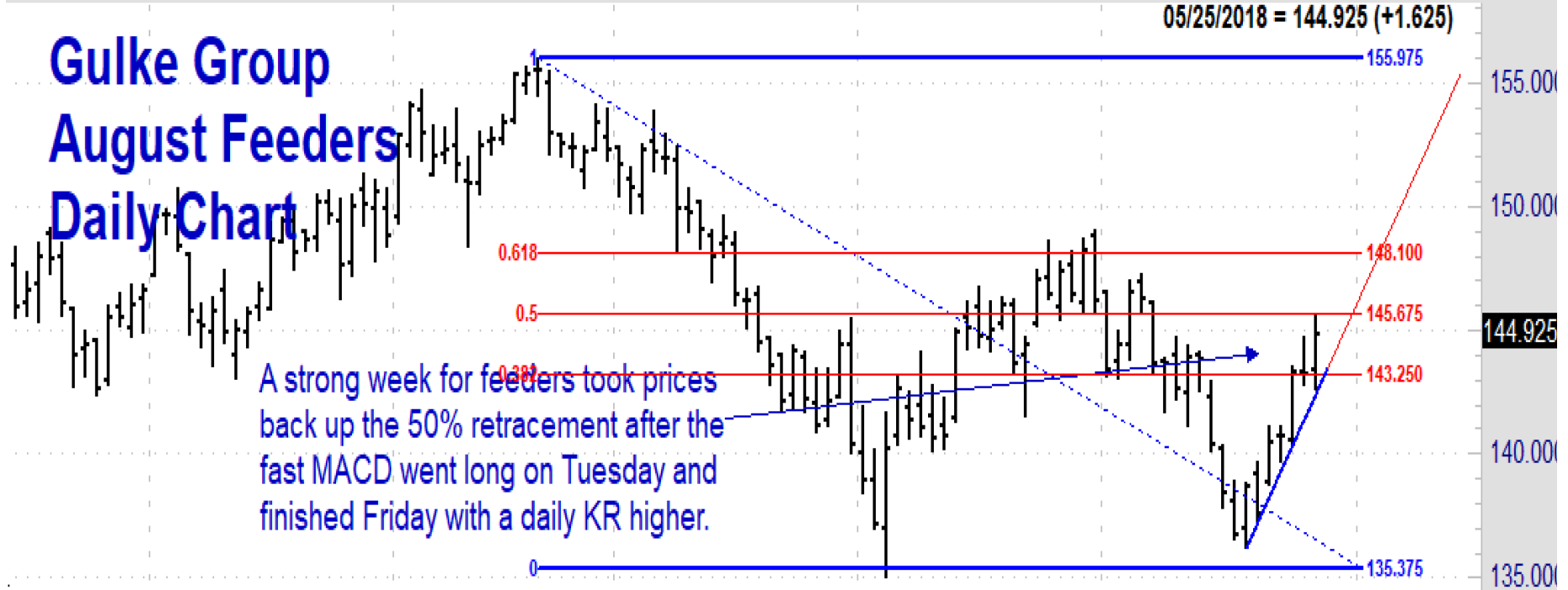


Nov-17 Dec-17 Jan-18 Feb-18 Mar-18 Apr-18 May-18 Jun-18

Disclaimer: Commodity trading and other speculative/ hedging investment practices involve substantial risk of loss. PAST RESULTS ARE NOT NECESSARILY INDICATIVE OF FUTURE RESULTS when utilizing the commodities markets. Gulke Group and its officers, directors, employees and affiliates may take positions for their own accounts that are the same or that are different to the positions and to the contracts referred to herein. This message contains information which may be confidential or privileged and is intended only for the individual or entity named above or the entity entitled to use a login/ password to www.GulkeGroup.com. It is prohibited for anyone else to disclose, copy, distribute or use the contents of this message. This material and any views expressed herein are provided for informational purposes only and should not be construed in any way as an endorsement or inducement to invest. Prices used in trade recommendations are already reflective of known information.

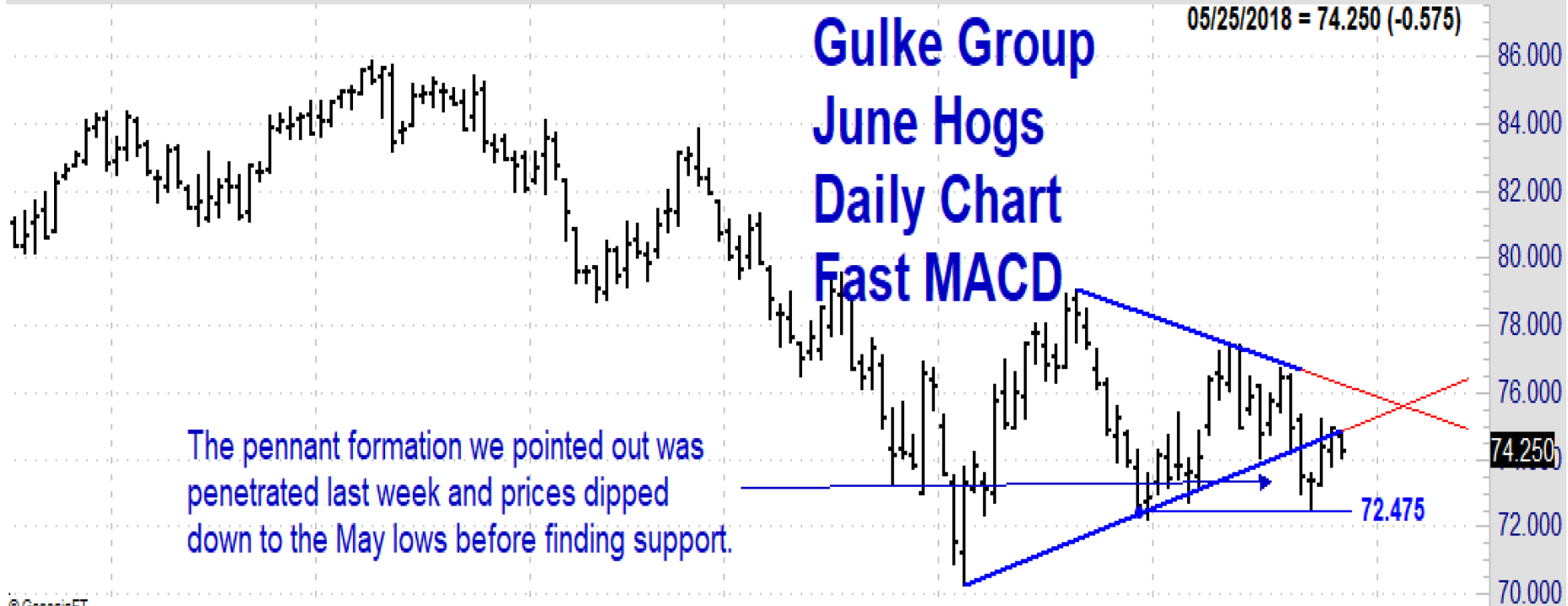
Fri 05/25/2018: O=143.475 H=145.575 L=142.675 C=144.925 TDofM=19 TDofY=101

Gulke Group August Feeders Daily Chart

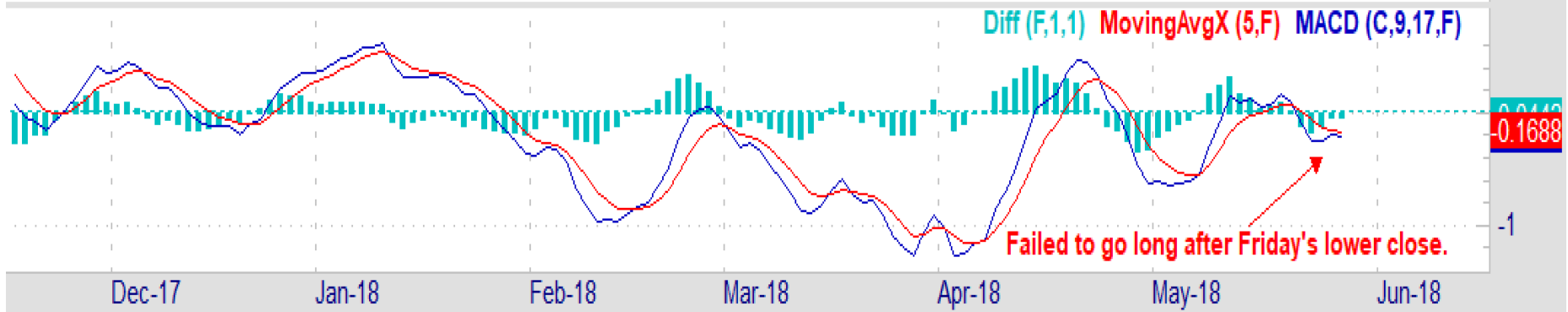


Disclaimer: Commodity trading and other speculative/ hedging investment practices involve substantial risk of loss. PAST RESULTS ARE NOT NECESSARILY INDICATIVE OF FUTURE RESULTS when utilizing the commodities markets. Gulke Group and its officers, directors, employees and affiliates may take positions for their own accounts that are the same or that are different to the positions and to the contracts referred to herein. This message contains information which may be confidential or privileged and is intended only for the individual or entity named above or the entity entitled to use a login/ password to www.GulkeGroup.com. It is prohibited for anyone else to disclose, copy, distribute or use the contents of this message. This material and any views expressed herein are provided for informational purposes only and should not be construed in any way as an endorsement or inducement to invest. Prices used in trade recommendations are already reflective of known information.

Fri 05/25/2018: O=74.675 H=74.850 L=74.075 C=74.250 TDofM=19 TDofY=101



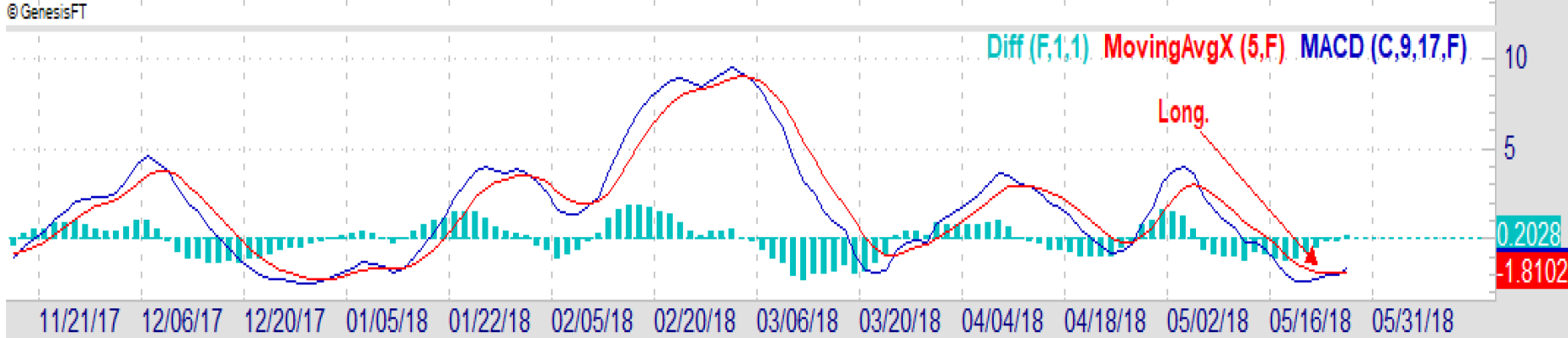
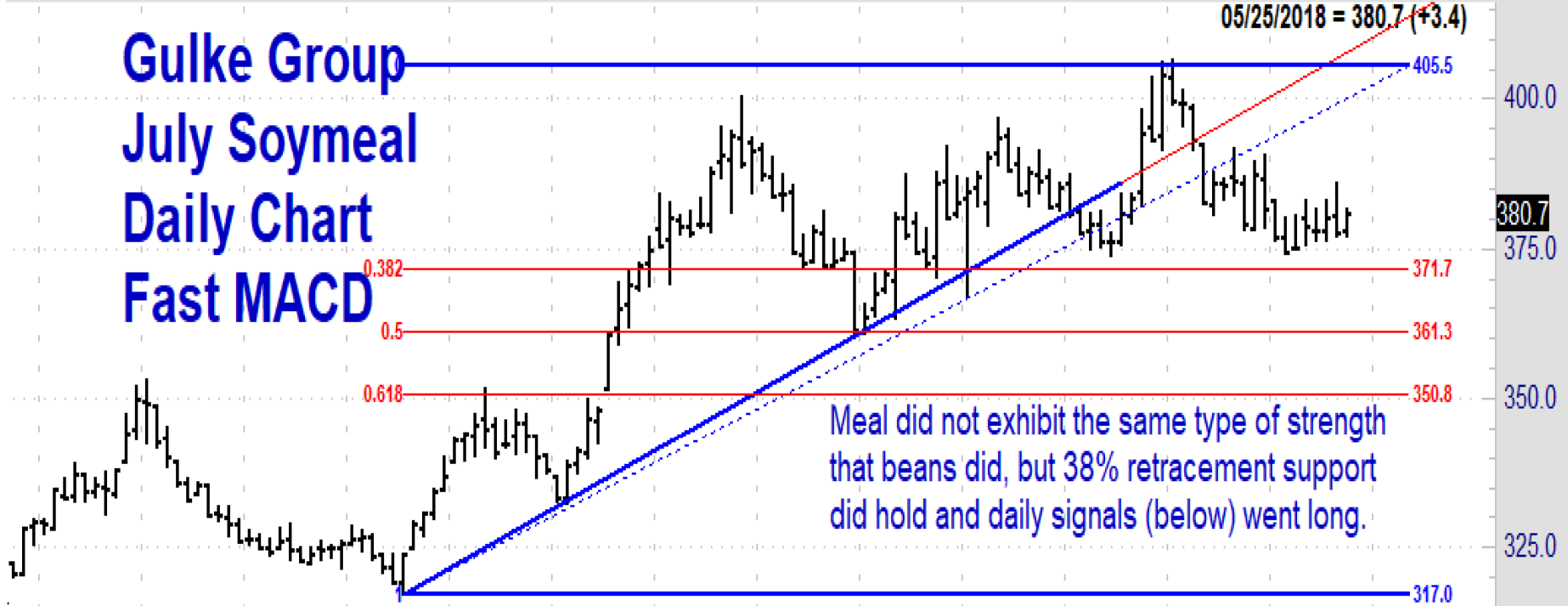
© GenesisFT



Disclaimer: Commodity trading and other speculative/ hedging investment practices involve substantial risk of loss. PAST RESULTS ARE NOT NECESSARILY INDICATIVE OF FUTURE RESULTS when utilizing the commodities markets. Gulke Group and its officers, directors, employees and affiliates may take positions for their own accounts that are the same or that are different to the positions and to the contracts referred to herein. This message contains information which may be confidential or privileged and is intended only for the individual or entity named above or the entity entitled to use a login/ password to www.GulkeGroup.com. It is prohibited for anyone else to disclose, copy, distribute or use the contents of this message. This material and any views expressed herein are provided for informational purposes only and should not be construed in any way as an endorsement or inducement to invest. Prices used in trade recommendations are already reflective of known information.

Fri 05/25/2018: O=377.9 H=381.6 L=377.0 C=380.7 TDofM=19 TDofY=101

Gulke Group July Soymeal Daily Chart Fast MACD

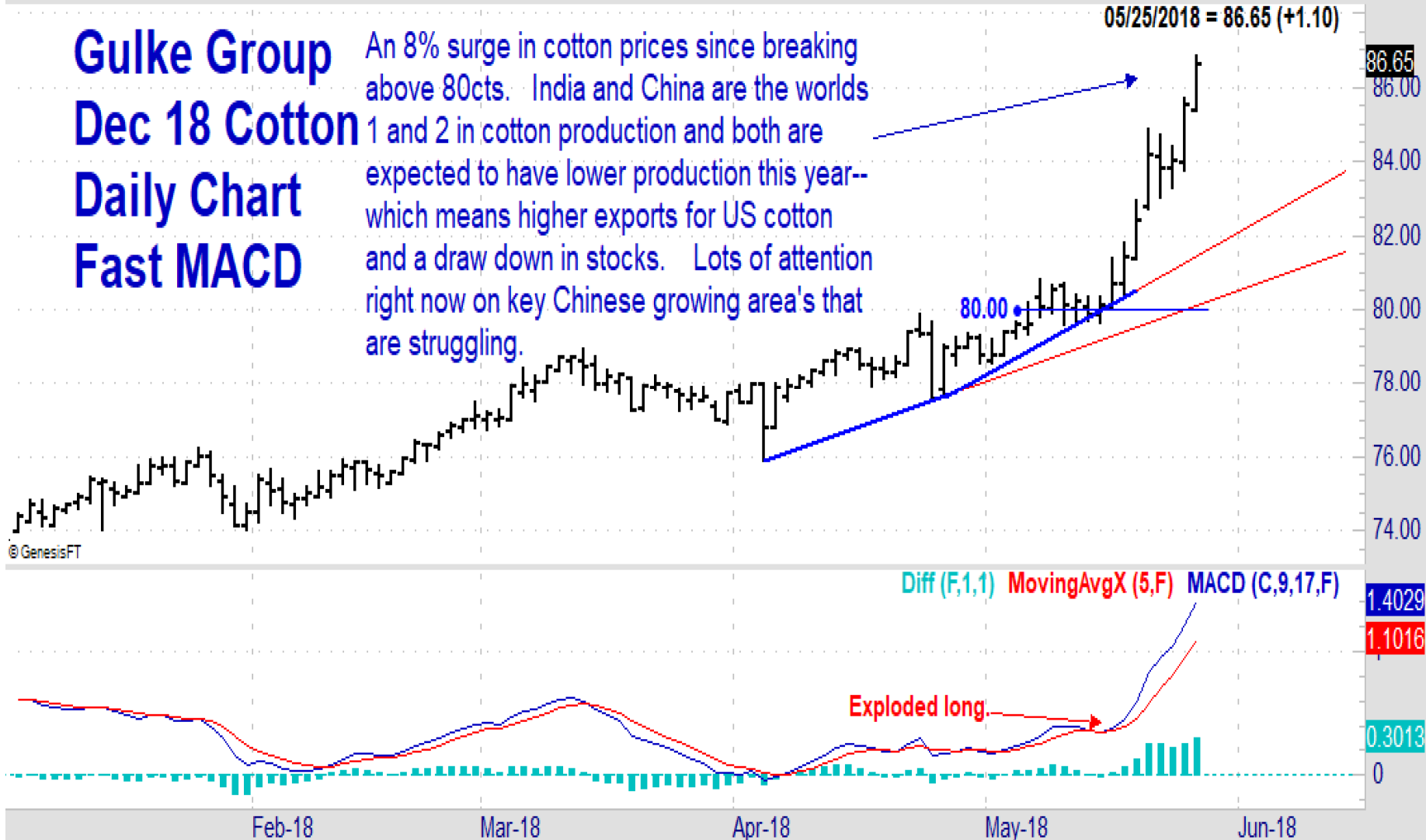


Disclaimer: Commodity trading and other speculative/ hedging investment practices involve substantial risk of loss. PAST RESULTS ARE NOT NECESSARILY INDICATIVE OF FUTURE RESULTS when utilizing the commodities markets. Gulke Group and its officers, directors, employees and affiliates may take positions for their own accounts that are the same or that are different to the positions and to the contracts referred to herein. This message contains information which may be confidential or privileged and is intended only for the individual or entity named above or the entity entitled to use a login/ password to www.GulkeGroup.com. It is prohibited for anyone else to disclose, copy, distribute or use the contents of this message. This material and any views expressed herein are provided for informational purposes only and should not be construed in any way as an endorsement or inducement to invest. Prices used in trade recommendations are already reflective of known information.

Fri 05/25/2018: O=85.40 H=86.85 L=85.35 C=86.65 TDofM=18 TDofY=100

Gulke Group Dec 18 Cotton Daily Chart Fast MACD

An 8% surge in cotton prices since breaking above 80cts. India and China are the worlds 1 and 2 in cotton production and both are expected to have lower production this year-- which means higher exports for US cotton and a draw down in stocks. Lots of attention right now on key Chinese growing area's that are struggling.



Disclaimer: Commodity trading and other speculative/ hedging investment practices involve substantial risk of loss. PAST RESULTS ARE NOT NECESSARILY INDICATIVE OF FUTURE RESULTS when utilizing the commodities markets. Gulke Group and its officers, directors, employees and affiliates may take positions for their own accounts that are the same or that are different to the positions and to the contracts referred to herein. This message contains information which may be confidential or privileged and is intended only for the individual or entity named above or the entity entitled to use a login/ password to www.GulkeGroup.com. It is prohibited for anyone else to disclose, copy, distribute or use the contents of this message. This material and any views expressed herein are provided for informational purposes only and should not be construed in any way as an endorsement or inducement to invest. Prices used in trade recommendations are already reflective of known information.