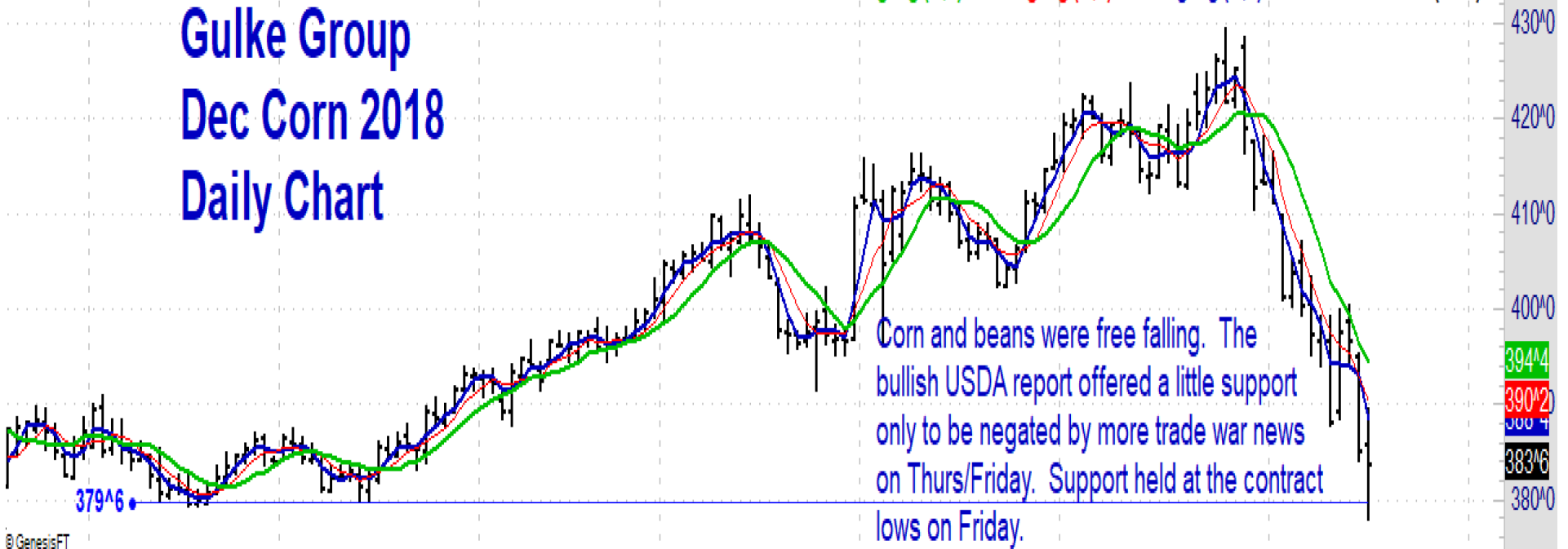


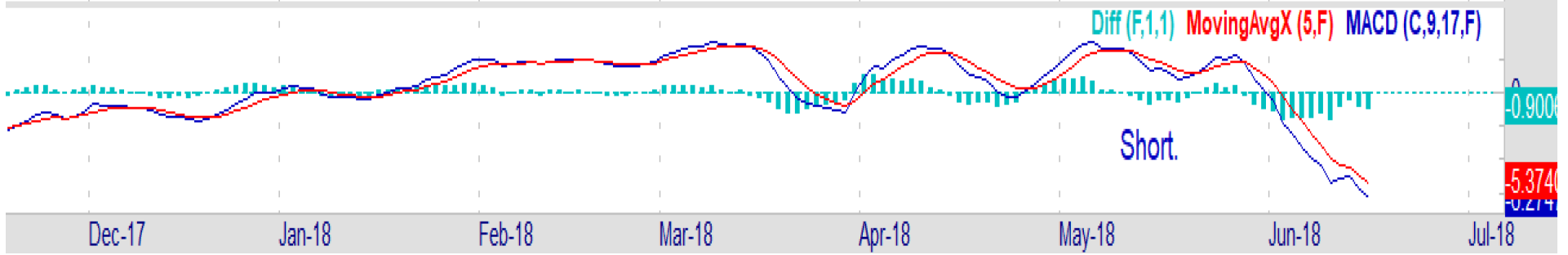
Fri 06/15/2018: O=385^6 H=389^4 L=377^6 C=383^6 MovingAvg= 388^4 MovingAvg= 390^2 MovingAvg= 394^4 TDofM=11 TDofY=115

MovingAvg (C,9) MovingAvg (C,5) MovingAvg (C,3) 06/15/2018 = 383^6 (-0^6)

# Gulke Group Dec Corn 2018 Daily Chart

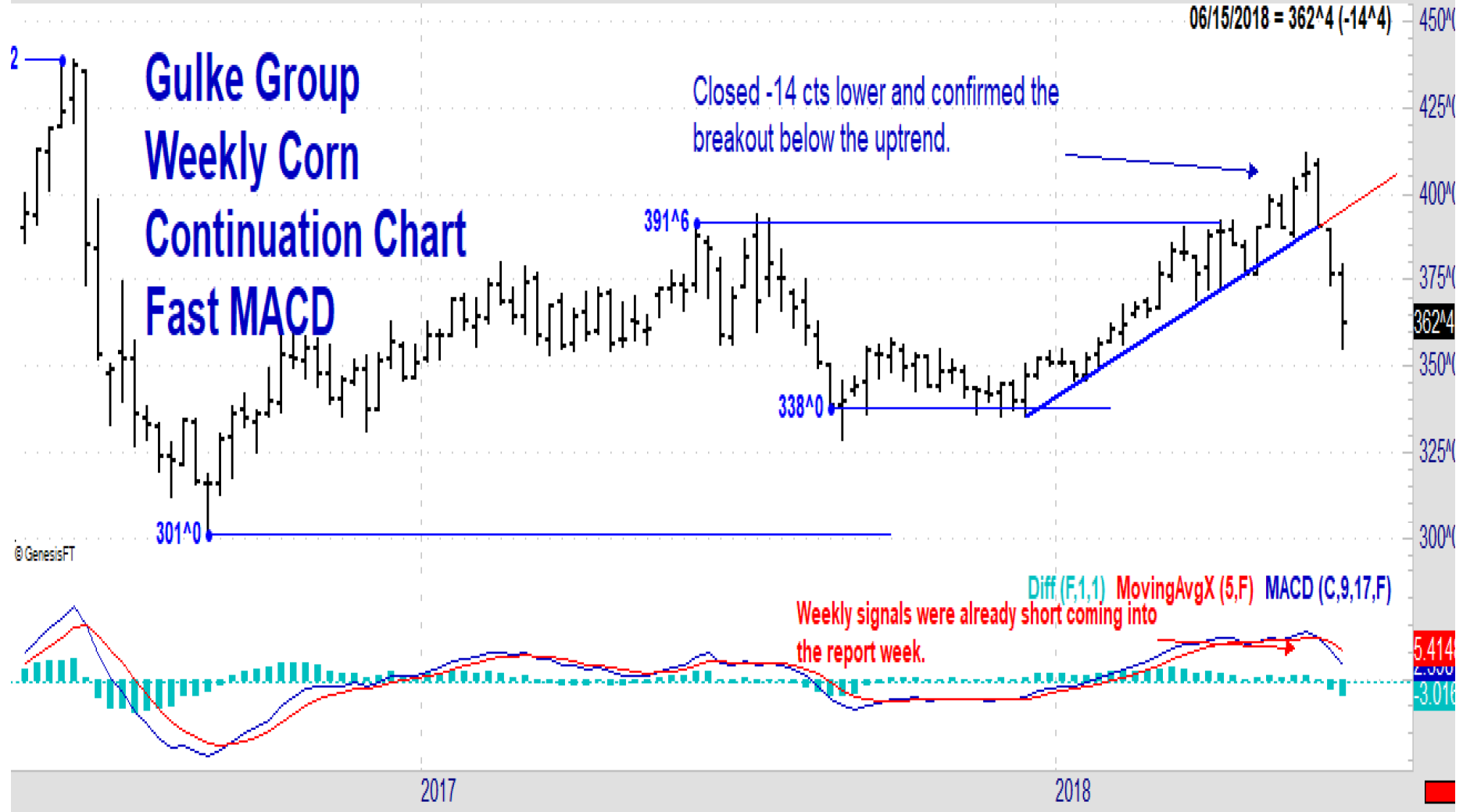


© GenesisFT



**Disclaimer:** Commodity trading and other speculative/ hedging investment practices involve substantial risk of loss. PAST RESULTS ARE NOT NECESSARILY INDICATIVE OF FUTURE RESULTS when utilizing the commodities markets. Gulke Group and its officers, directors, employees and affiliates may take positions for their own accounts that are the same or that are different to the positions and to the contracts referred to herein. This message contains information which may be confidential or privileged and is intended only for the individual or entity named above or the entity entitled to use a login/ password to [www.GulkeGroup.com](http://www.GulkeGroup.com). It is prohibited for anyone else to disclose, copy, distribute or use the contents of this message. This material and any views expressed herein are provided for informational purposes only and should not be construed in any way as an endorsement or inducement to invest. Prices used in trade recommendations are already reflective of known information.

Fri 06/15/2018 (ZC-201807): O=376^4 H=379^6 L=355^2 C=362^4 TWofY=24



Disclaimer: Commodity trading and other speculative/ hedging investment practices involve substantial risk of loss. PAST RESULTS ARE NOT NECESSARILY INDICATIVE OF FUTURE RESULTS when utilizing the commodities markets. Gulke Group and its officers, directors, employees and affiliates may take positions for their own accounts that are the same or that are different to the positions and to the contracts referred to herein. This message contains information which may be confidential or privileged and is intended only for the individual or entity named above or the entity entitled to use a login/ password to [www.GulkeGroup.com](http://www.GulkeGroup.com). It is prohibited for anyone else to disclose, copy, distribute or use the contents of this message. This material and any views expressed herein are provided for informational purposes only and should not be construed in any way as an endorsement or inducement to invest. Prices used in trade recommendations are already reflective of known information.

Fri 06/15/2018: O=950^0 H=953^0 L=927^2 C=929^2 TDofM=11 TDofY=115

# Gulke Group Nov Beans Daily Chart

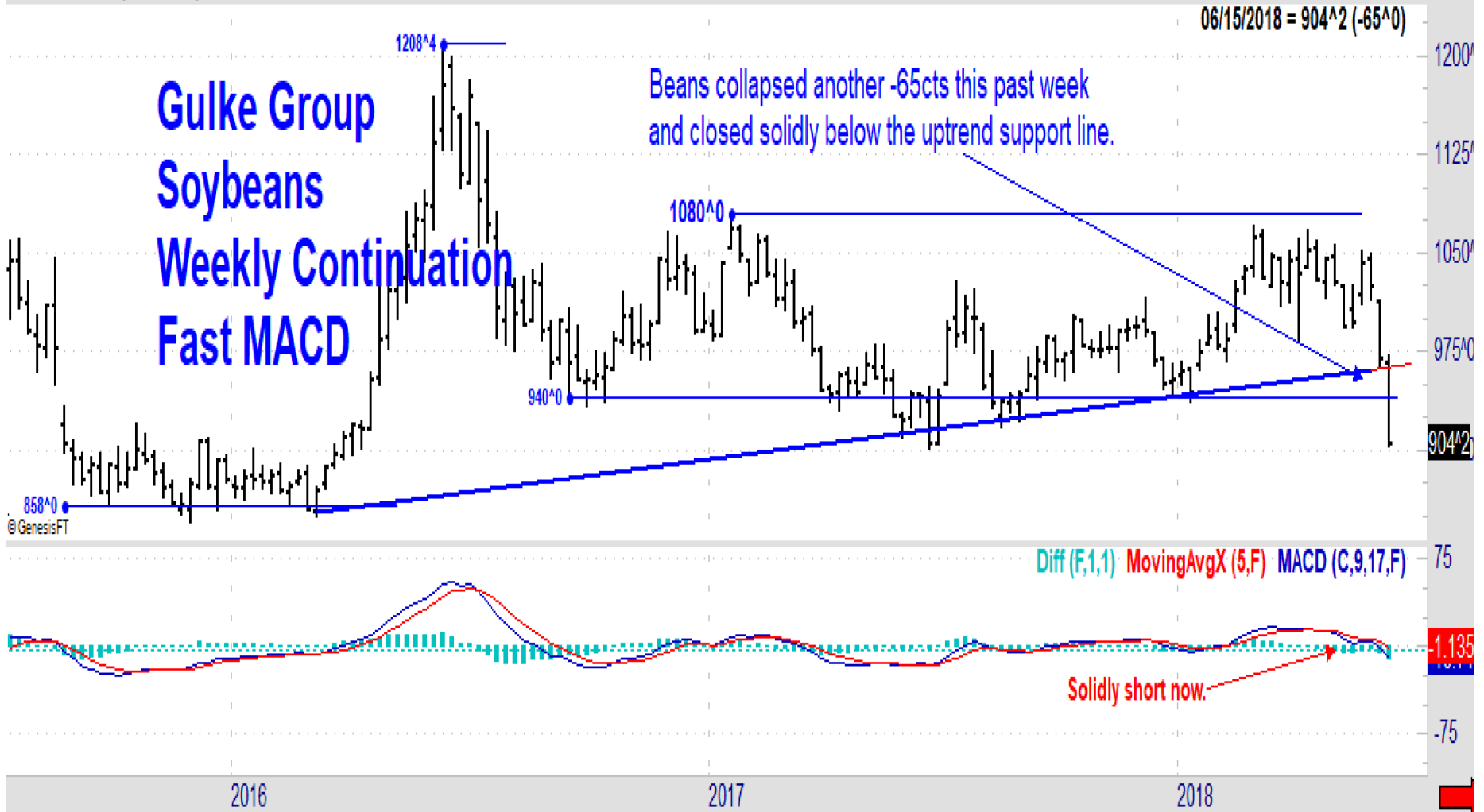


New crop beans gave back everything they spent 12 months gaining in just 3 weeks. Friday's close on the lows of the day was just 6cts above last summers lows at \$9.23.

© GenesisFT

**Disclaimer:** Commodity trading and other speculative/ hedging investment practices involve substantial risk of loss. PAST RESULTS ARE NOT NECESSARILY INDICATIVE OF FUTURE RESULTS when utilizing the commodities markets. Gulke Group and its officers, directors, employees and affiliates may take positions for their own accounts that are the same or that are different to the positions and to the contracts referred to herein. This message contains information which may be confidential or privileged and is intended only for the individual or entity named above or the entity entitled to use a login/ password to [www.GulkeGroup.com](http://www.GulkeGroup.com). It is prohibited for anyone else to disclose, copy, distribute or use the contents of this message. This material and any views expressed herein are provided for informational purposes only and should not be construed in any way as an endorsement or inducement to invest. Prices used in trade recommendations are already reflective of known information.

Fri 06/15/2018 (ZS-201807): O=966^6 H=972^2 L=903^0 C=904^2 TWofY=24



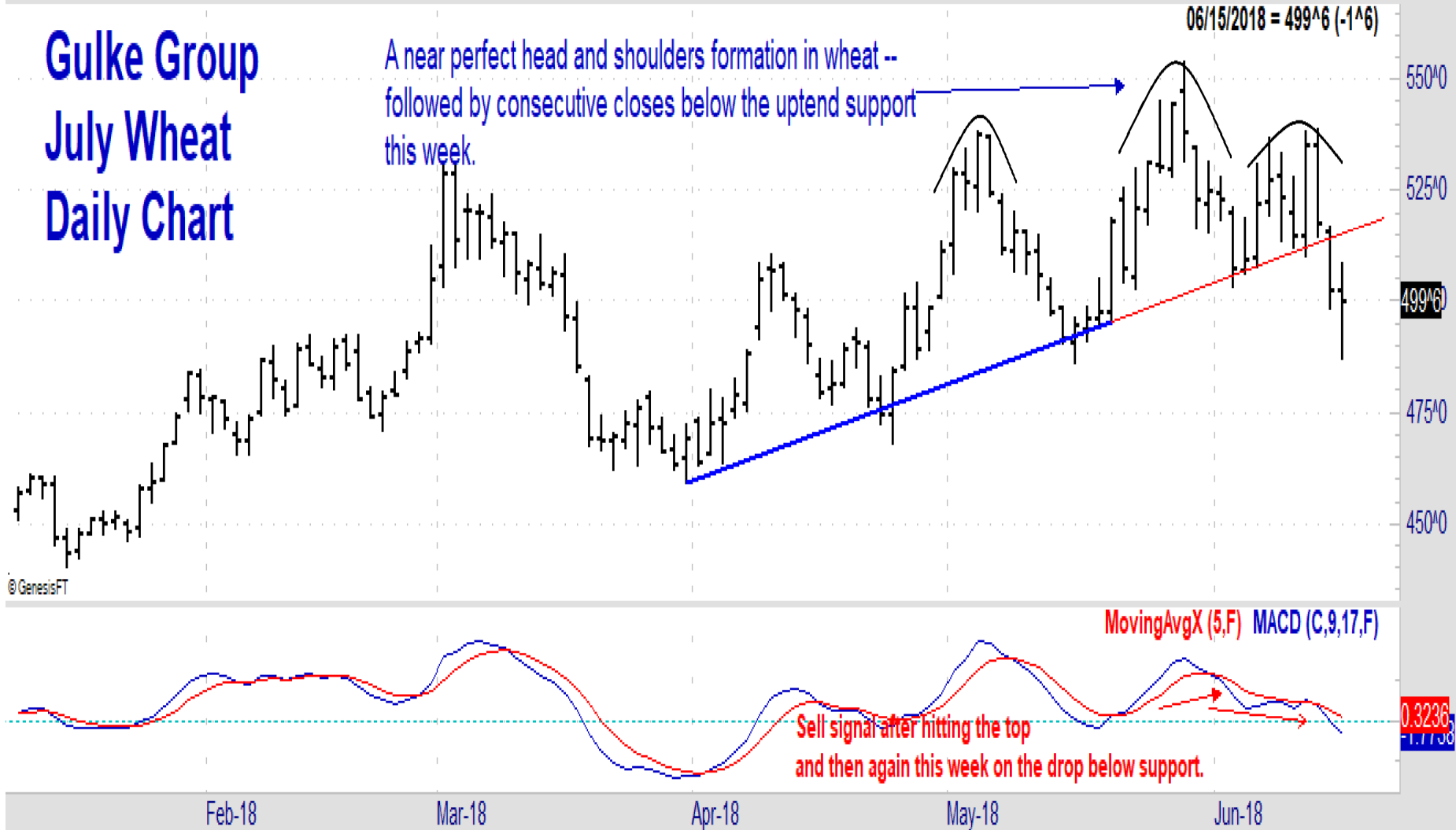
Disclaimer: Commodity trading and other speculative/ hedging investment practices involve substantial risk of loss. PAST RESULTS ARE NOT NECESSARILY INDICATIVE OF FUTURE RESULTS when utilizing the commodities markets. Gulke Group and its officers, directors, employees and affiliates may take positions for their own accounts that are the same or that are different to the positions and to the contracts referred to herein. This message contains information which may be confidential or privileged and is intended only for the individual or entity named above or the entity entitled to use a login/ password to [www.GulkeGroup.com](http://www.GulkeGroup.com). It is prohibited for anyone else to disclose, copy, distribute or use the contents of this message. This material and any views expressed herein are provided for informational purposes only and should not be construed in any way as an endorsement or inducement to invest. Prices used in trade recommendations are already reflective of known information.

Fri 06/15/2018: O=502^4 H=508^6 L=487^0 C=499^6 TDofM=11 TDofY=115

# Gulke Group July Wheat Daily Chart

A near perfect head and shoulders formation in wheat -- followed by consecutive closes below the uptrend support this week.

06/15/2018 = 499^6 (-1^6)



Disclaimer: Commodity trading and other speculative/ hedging investment practices involve substantial risk of loss. PAST RESULTS ARE NOT NECESSARILY INDICATIVE OF FUTURE RESULTS when utilizing the commodities markets. Gulke Group and its officers, directors, employees and affiliates may take positions for their own accounts that are the same or that are different to the positions and to the contracts referred to herein. This message contains information which may be confidential or privileged and is intended only for the individual or entity named above or the entity entitled to use a login/ password to [www.GulkeGroup.com](http://www.GulkeGroup.com). It is prohibited for anyone else to disclose, copy, distribute or use the contents of this message. This material and any views expressed herein are provided for informational purposes only and should not be construed in any way as an endorsement or inducement to invest. Prices used in trade recommendations are already reflective of known information.

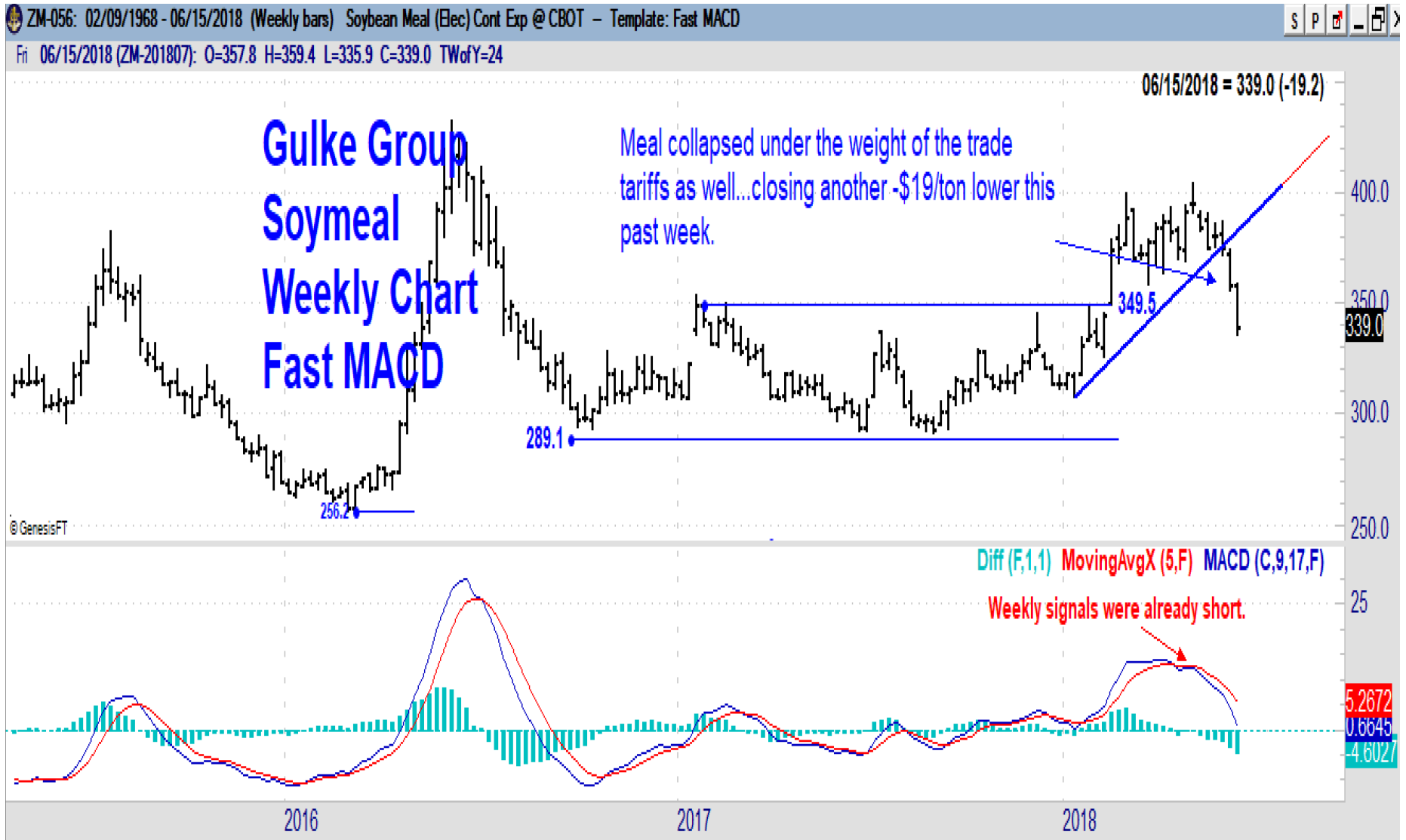
Fri 06/15/2018 (ZW-201807): O=520^0 H=538^6 L=487^0 C=499^6 TWofY=24

**Gulke Group**  
**Wheat**  
**Weekly Continuation**  
**Fast MACD**

Like with corn and beans, the wheat carryout got tighter this week as well, but it mattered not. Wheat dropped all the way down to uptrend support and finished the week -23cts lower.

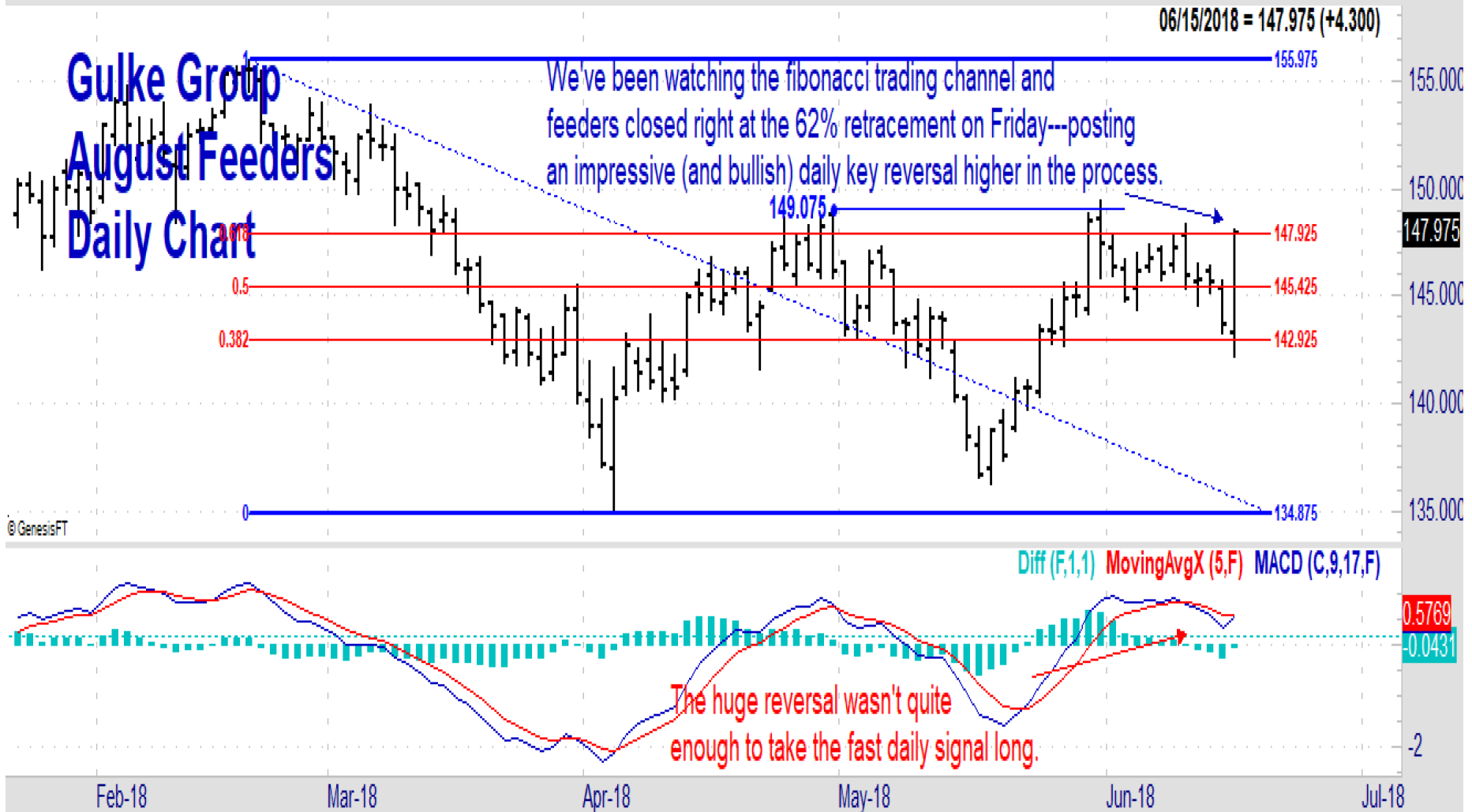


**Disclaimer:** Commodity trading and other speculative/ hedging investment practices involve substantial risk of loss. PAST RESULTS ARE NOT NECESSARILY INDICATIVE OF FUTURE RESULTS when utilizing the commodities markets. Gulke Group and its officers, directors, employees and affiliates may take positions for their own accounts that are the same or that are different to the positions and to the contracts referred to herein. This message contains information which may be confidential or privileged and is intended only for the individual or entity named above or the entity entitled to use a login/ password to [www.GulkeGroup.com](http://www.GulkeGroup.com). It is prohibited for anyone else to disclose, copy, distribute or use the contents of this message. This material and any views expressed herein are provided for informational purposes only and should not be construed in any way as an endorsement or inducement to invest. Prices used in trade recommendations are already reflective of known information.



**Disclaimer:** Commodity trading and other speculative/ hedging investment practices involve substantial risk of loss. PAST RESULTS ARE NOT NECESSARILY INDICATIVE OF FUTURE RESULTS when utilizing the commodities markets. Gulke Group and its officers, directors, employees and affiliates may take positions for their own accounts that are the same or that are different to the positions and to the contracts referred to herein. This message contains information which may be confidential or privileged and is intended only for the individual or entity named above or the entity entitled to use a login/ password to [www.GulkeGroup.com](http://www.GulkeGroup.com). It is prohibited for anyone else to disclose, copy, distribute or use the contents of this message. This material and any views expressed herein are provided for informational purposes only and should not be construed in any way as an endorsement or inducement to invest. Prices used in trade recommendations are already reflective of known information.

Fri 06/15/2018: O=143.300 H=148.075 L=142.175 C=147.975 TDofM=11 TDofY=115



**Disclaimer:** Commodity trading and other speculative/ hedging investment practices involve substantial risk of loss. PAST RESULTS ARE NOT NECESSARILY INDICATIVE OF FUTURE RESULTS when utilizing the commodities markets. Gulke Group and its officers, directors, employees and affiliates may take positions for their own accounts that are the same or that are different to the positions and to the contracts referred to herein. This message contains information which may be confidential or privileged and is intended only for the individual or entity named above or the entity entitled to use a login/ password to [www.GulkeGroup.com](http://www.GulkeGroup.com). It is prohibited for anyone else to disclose, copy, distribute or use the contents of this message. This material and any views expressed herein are provided for informational purposes only and should not be construed in any way as an endorsement or inducement to invest. Prices used in trade recommendations are already reflective of known information.



Fri 06/15/2018: O=104.350 H=107.500 L=103.500 C=107.450 TDoF=11 TDoY=115

06/15/2018 = 107.450 (+2.650)

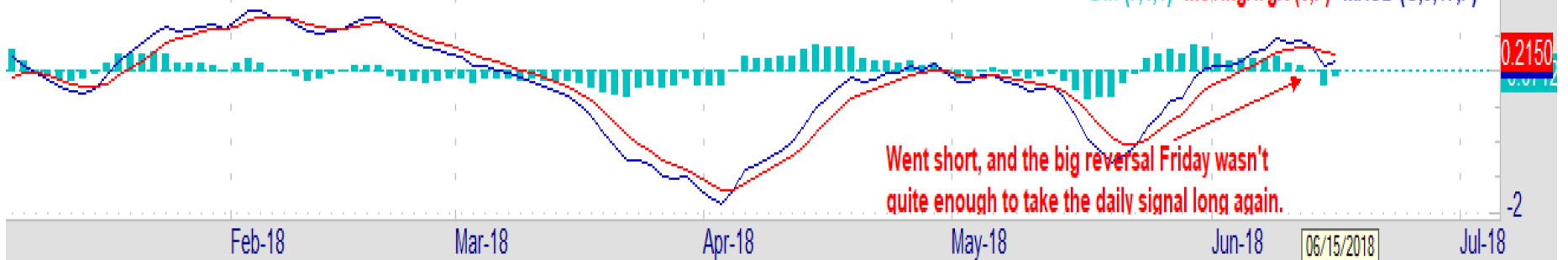
**Gulke Group**  
**Oct LC**  
**Daily Chart**  
**Fast MACD**

LC also posted a daily key reversal higher on Friday, but it wasn't enough to take the fast daily signal long. There needs to be a higher close on Monday in order for that to happen....

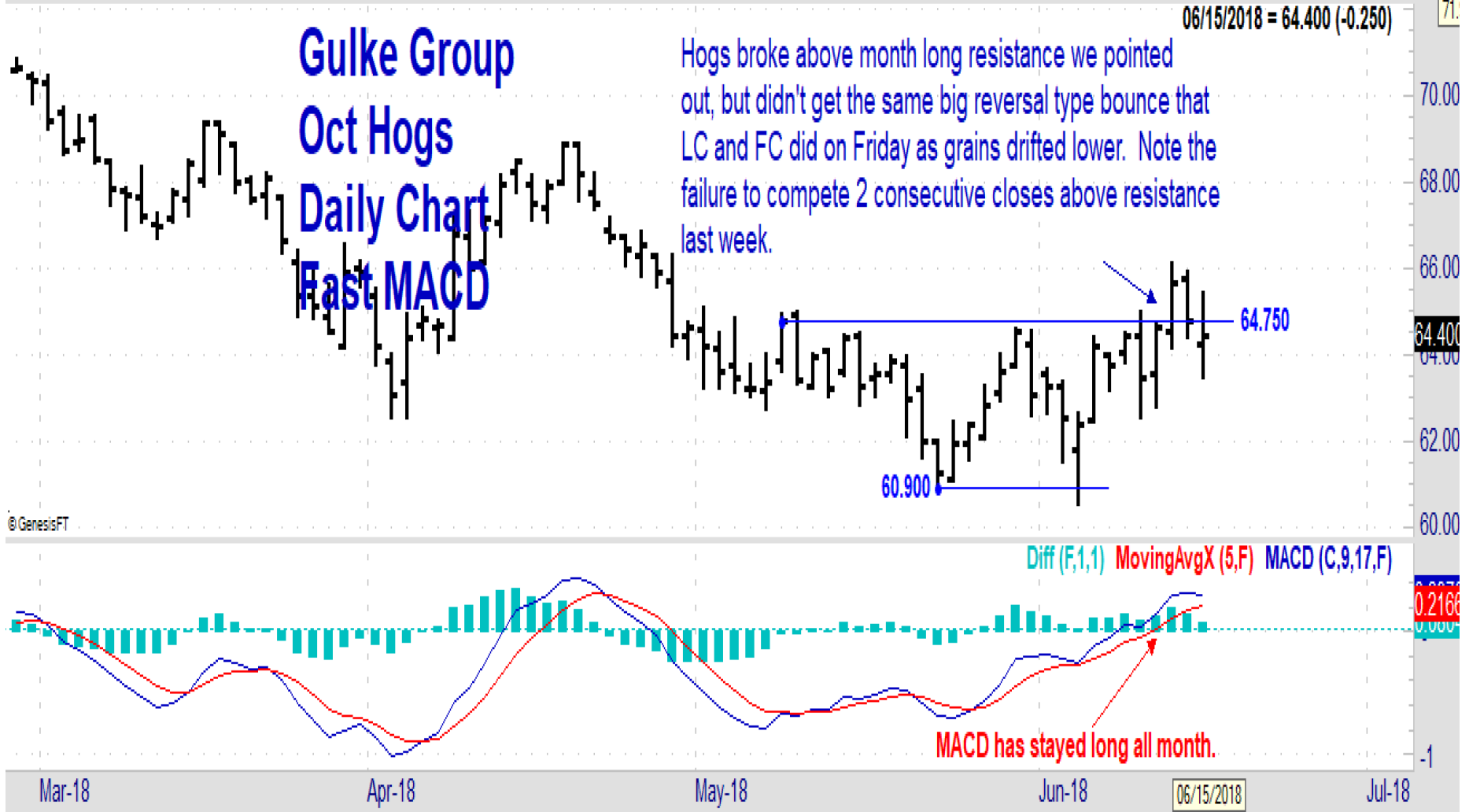


© GenesisFT

Diff (F,1,1) MovingAvgX (5,F) MACD (C,9,17,F)

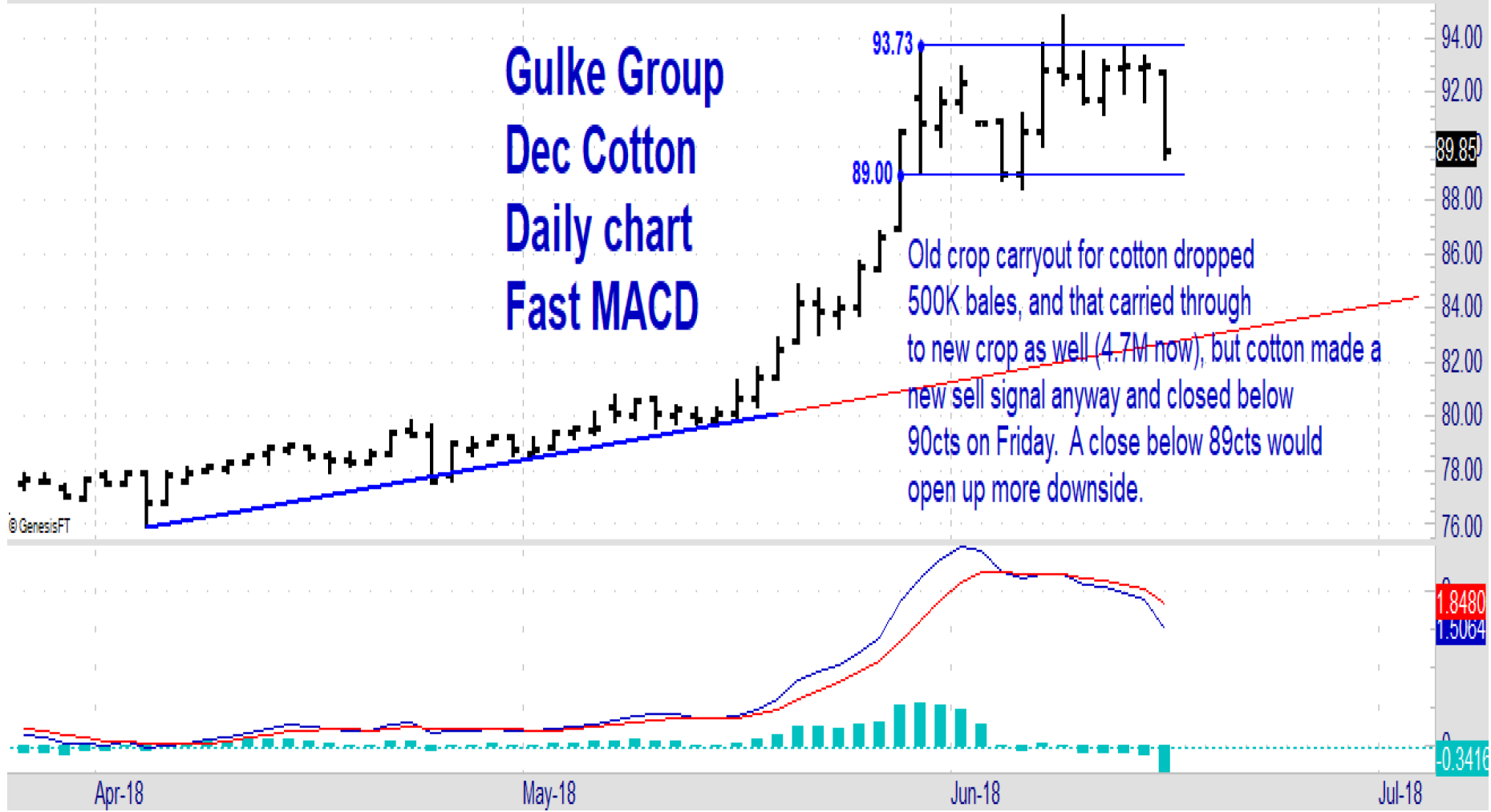


**Disclaimer:** Commodity trading and other speculative/ hedging investment practices involve substantial risk of loss. PAST RESULTS ARE NOT NECESSARILY INDICATIVE OF FUTURE RESULTS when utilizing the commodities markets. Gulke Group and its officers, directors, employees and affiliates may take positions for their own accounts that are the same or that are different to the positions and to the contracts referred to herein. This message contains information which may be confidential or privileged and is intended only for the individual or entity named above or the entity entitled to use a login/ password to [www.GulkeGroup.com](http://www.GulkeGroup.com). It is prohibited for anyone else to disclose, copy, distribute or use the contents of this message. This material and any views expressed herein are provided for informational purposes only and should not be construed in any way as an endorsement or inducement to invest. Prices used in trade recommendations are already reflective of known information.



**Disclaimer:** Commodity trading and other speculative/ hedging investment practices involve substantial risk of loss. PAST RESULTS ARE NOT NECESSARILY INDICATIVE OF FUTURE RESULTS when utilizing the commodities markets. Gulke Group and its officers, directors, employees and affiliates may take positions for their own accounts that are the same or that are different to the positions and to the contracts referred to herein. This message contains information which may be confidential or privileged and is intended only for the individual or entity named above or the entity entitled to use a login/ password to [www.GulkeGroup.com](http://www.GulkeGroup.com). It is prohibited for anyone else to disclose, copy, distribute or use the contents of this message. This material and any views expressed herein are provided for informational purposes only and should not be construed in any way as an endorsement or inducement to invest. Prices used in trade recommendations are already reflective of known information.

# Gulke Group Dec Cotton Daily chart Fast MACD



Old crop carryout for cotton dropped 500K bales, and that carried through to new crop as well (4.7M now), but cotton made a new sell signal anyway and closed below 90cts on Friday. A close below 89cts would open up more downside.

**Disclaimer: Commodity trading and other speculative/ hedging investment practices involve substantial risk of loss. PAST RESULTS ARE NOT NECESSARILY INDICATIVE OF FUTURE RESULTS** when utilizing the commodities markets. Gulke Group and its officers, directors, employees and affiliates may take positions for their own accounts that are the same or that are different to the positions and to the contracts referred to herein. This message contains information which may be confidential or privileged and is intended only for the individual or entity named above or the entity entitled to use a login/ password to [www.GulkeGroup.com](http://www.GulkeGroup.com). It is prohibited for anyone else to disclose, copy, distribute or use the contents of this message. This material and any views expressed herein are provided for informational purposes only and should not be construed in any way as an endorsement or inducement to invest. Prices used in trade recommendations are already reflective of known information.

**Disclaimer: Commodity trading and other speculative/ hedging investment practices involve substantial risk of loss. PAST RESULTS ARE NOT NECESSARILY INDICATIVE OF FUTURE RESULTS when utilizing the commodities markets. Gulke Group and its officers, directors, employees and affiliates may take positions for their own accounts that are the same or that are different to the positions and to the contracts referred to herein. This message contains information which may be confidential or privileged and is intended only for the individual or entity named above or the entity entitled to use a login/ password to [www.GulkeGroup.com](http://www.GulkeGroup.com). It is prohibited for anyone else to disclose, copy, distribute or use the contents of this message. This material and any views expressed herein are provided for informational purposes only and should not be construed in any way as an endorsement or inducement to invest. Prices used in trade recommendations are already reflective of known information.**